

PRSS16 Antibody (N-term)

Affinity Purified Rabbit Polyclonal Antibody (Pab)

Catalog # AP16588a

Product Information

Application	WB, E
Primary Accession	Q9NQE7
Other Accession	NP_005856.1
Reactivity	Human, Mouse
Host	Rabbit
Clonality	Polyclonal
Isotype	Rabbit IgG
Clone Names	RB35598
Calculated MW	55049
Antigen Region	52-81

Additional Information

Gene ID	10279
Other Names	Thymus-specific serine protease, 34--, Serine protease 16, PRSS16, TSSP
Target/Specificity	This PRSS16 antibody is generated from rabbits immunized with a KLH conjugated synthetic peptide between 52-81 amino acids from the N-terminal region of human PRSS16.
Dilution	WB~~1:1000 E~~Use at an assay dependent concentration.
Format	Purified polyclonal antibody supplied in PBS with 0.09% (W/V) sodium azide. This antibody is purified through a protein A column, followed by peptide affinity purification.
Storage	Maintain refrigerated at 2-8°C for up to 2 weeks. For long term storage store at -20°C in small aliquots to prevent freeze-thaw cycles.
Precautions	PRSS16 Antibody (N-term) is for research use only and not for use in diagnostic or therapeutic procedures.

Protein Information

Name	PRSS16
Synonyms	TSSP
Function	Protease that may play a role in T-cell development.

Cellular Location	Cytoplasmic vesicle. Note=Vesicular, either lysosomal or endosomal
Tissue Location	Expressed predominantly in cortical thymic epithelial cells

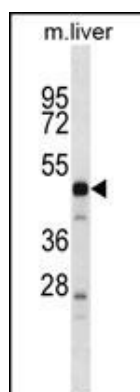
Background

This gene encodes a serine protease expressed exclusively in the thymus. It is thought to play a role in the alternative antigen presenting pathway used by cortical thymic epithelial cells during the positive selection of T cells. The gene is found in the large histone gene cluster on chromosome 6, near the major histocompatibility complex (MHC) class I region. A second transcript variant has been described, but its full length nature has not been determined.

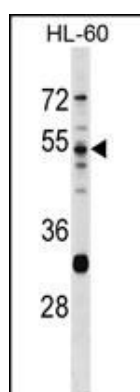
References

Shi, J., et al. Nature 460(7256):753-757(2009)
 Stefansson, H., et al. Nature 460(7256):744-747(2009)
 Viken, M.K., et al. Genes Immun. 10(4):323-333(2009)
 Lie, B.A., et al. Hum. Immunol. 68(7):592-598(2007)
 Luther, C., et al. Genes Immun. 6(1):1-7(2005)

Images



PRSS16 Antibody (N-term) (Cat. #AP16588a) western blot analysis in mouse liver tissue lysates (35ug/lane). This demonstrates the PRSS16 antibody detected the PRSS16 protein (arrow).



PRSS16 Antibody (N-term) (Cat. #AP16588a) western blot analysis in HL-60 cell line lysates (35ug/lane). This demonstrates the PRSS16 antibody detected the PRSS16 protein (arrow).

Please note: All products are 'FOR RESEARCH USE ONLY. NOT FOR USE IN DIAGNOSTIC OR THERAPEUTIC PROCEDURES'.