

MRC1L1 Antibody (N-term)

Affinity Purified Rabbit Polyclonal Antibody (Pab)

Catalog # AP16595a

Product Information

Application	WB, E
Primary Accession	P22897
Other Accession	Q5VSK2 , NP_001009567.1
Reactivity	Human, Mouse
Host	Rabbit
Clonality	Polyclonal
Isotype	Rabbit IgG
Clone Names	RB35713
Calculated MW	166012
Antigen Region	359-388

Additional Information

Gene ID	4360
Other Names	Macrophage mannose receptor 1, MMR, C-type lectin domain family 13 member D, C-type lectin domain family 13 member D-like, Macrophage mannose receptor 1-like protein 1, CD206, MRC1, CLEC13D, CLEC13DL, MRC1L1
Target/Specificity	This MRC1L1 antibody is generated from rabbits immunized with a KLH conjugated synthetic peptide between 359-388 amino acids from the N-terminal region of human MRC1L1.
Dilution	WB~~1:1000 E~~Use at an assay dependent concentration.
Format	Purified polyclonal antibody supplied in PBS with 0.09% (W/V) sodium azide. This antibody is purified through a protein A column, followed by peptide affinity purification.
Storage	Maintain refrigerated at 2-8°C for up to 2 weeks. For long term storage store at -20°C in small aliquots to prevent freeze-thaw cycles.
Precautions	MRC1L1 Antibody (N-term) is for research use only and not for use in diagnostic or therapeutic procedures.

Protein Information

Name	MRC1
Synonyms	CLEC13D, CLEC13DL, MRC1L1

Function	Mediates the endocytosis of glycoproteins by macrophages. Binds both sulfated and non-sulfated polysaccharide chains. (Microbial infection) Acts as a receptor for Dengue virus envelope protein E.
Cellular Location	Endosome membrane; Single-pass type I membrane protein. Cell membrane; Single-pass type I membrane protein

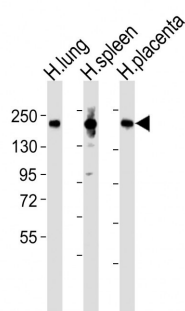
Background

This gene encodes a type I membrane receptor protein highly related to the mannose receptor C type 1 protein (MRC1). The two genes are located near each other on chromosome 10 in a region thought to represent a segmental duplication.

References

Kamatani, Y., et al. Nat. Genet. 42(3):210-215(2010)

Images



All lanes : Anti-MRC1L1 Antibody (N-term) at 1:2000 dilution
Lane 1: human lung lysates
Lane 2: human spleen lysates
Lane 3: human placenta lysates
Lysates/proteins at 20 µg per lane. Secondary Goat Anti-Rabbit IgG, (H+L), Peroxidase conjugated at 1/10000 dilution
Predicted band size : 166 kDa
Blocking/Dilution buffer: 5% NFDM/TBST.

Please note: All products are 'FOR RESEARCH USE ONLY. NOT FOR USE IN DIAGNOSTIC OR THERAPEUTIC PROCEDURES'.