

FAIM2 Antibody (Center)

Affinity Purified Rabbit Polyclonal Antibody (Pab)

Catalog # AP16603c

Product Information

Application	WB, E
Primary Accession	Q9BWQ8
Other Accession	NP_036438.2
Reactivity	Human
Host	Rabbit
Clonality	Polyclonal
Isotype	Rabbit IgG
Clone Names	RB35884
Calculated MW	35110
Antigen Region	76-105

Additional Information

Gene ID	23017
Other Names	Protein lifeguard 2, Fas apoptotic inhibitory molecule 2, Neural membrane protein 35, Transmembrane BAX inhibitor motif-containing protein 2, FAIM2, KIAA0950, LFG, LFG2, NMP35, TMBIM2
Target/Specificity	This FAIM2 antibody is generated from rabbits immunized with a KLH conjugated synthetic peptide between 76-105 amino acids from the Central region of human FAIM2.
Dilution	WB~~1:1000 E~~Use at an assay dependent concentration.
Format	Purified polyclonal antibody supplied in PBS with 0.09% (W/V) sodium azide. This antibody is purified through a protein A column, followed by peptide affinity purification.
Storage	Maintain refrigerated at 2-8°C for up to 2 weeks. For long term storage store at -20°C in small aliquots to prevent freeze-thaw cycles.
Precautions	FAIM2 Antibody (Center) is for research use only and not for use in diagnostic or therapeutic procedures.

Protein Information

Name	FAIM2
Synonyms	KIAA0950, LFG, LFG2, NMP35, TMBIM2

Function	Antiapoptotic protein which protects cells uniquely from Fas- induced apoptosis. Regulates Fas-mediated apoptosis in neurons by interfering with caspase-8 activation. May play a role in cerebellar development by affecting cerebellar size, internal granular layer (IGL) thickness, and Purkinje cell (PC) development.
Cellular Location	Cell membrane; Multi-pass membrane protein. Membrane raft Postsynaptic cell membrane
Tissue Location	Highly expressed in breast carcinoma tissues. Enhanced expression correlates with the grade of the tumor (grade II/grade III) in primary breast tumors (at protein level). Widely expressed. Expressed at high levels in the brain especially in the hippocampus.

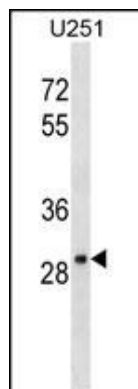
Background

FAIM2 protects cells uniquely from Fas-induced apoptosis.

References

Melen, E., et al. J. Allergy Clin. Immunol. 126(3):631-637(2010)
 Bucan, V., et al. Cell. Mol. Biol. Lett. 15(2):296-310(2010)
 Ng, M.C., et al. J. Clin. Endocrinol. Metab. 95(5):2418-2425(2010)
 Li, S., et al. Am. J. Clin. Nutr. 91(1):184-190(2010)
 Hotta, K., et al. J. Hum. Genet. 54(12):727-731(2009)

Images



FAIM2 Antibody (Center) (Cat. #AP16603c) western blot analysis in U251 cell line lysates (35ug/lane). This demonstrates the FAIM2 antibody detected the FAIM2 protein (arrow).

Citations

- [FAIM2, as a novel diagnostic maker and a potential therapeutic target for small-cell lung cancer and atypical carcinoid.](#)

Please note: All products are 'FOR RESEARCH USE ONLY. NOT FOR USE IN DIAGNOSTIC OR THERAPEUTIC PROCEDURES'.