

PCTP Antibody (Center)

Affinity Purified Rabbit Polyclonal Antibody (Pab)

Catalog # AP16620c

Product Information

| | |
|--------------------------|--|
| Application | WB, E |
| Primary Accession | Q9UKL6 |
| Other Accession | NP_001095872.1 , NP_067036.2 |
| Reactivity | Human |
| Host | Rabbit |
| Clonality | Polyclonal |
| Isotype | Rabbit IgG |
| Clone Names | RB36090 |
| Calculated MW | 24843 |
| Antigen Region | 59-87 |

Additional Information

| | |
|---------------------------|--|
| Gene ID | 58488 |
| Other Names | Phosphatidylcholine transfer protein, PC-TP, START domain-containing protein 2, StARD2, StAR-related lipid transfer protein 2, PCTP, STARD2 |
| Target/Specificity | This PCTP antibody is generated from rabbits immunized with a KLH conjugated synthetic peptide between 59-87 amino acids from the Central region of human PCTP. |
| Dilution | WB~~1:1000 E~~Use at an assay dependent concentration. |
| Format | Purified polyclonal antibody supplied in PBS with 0.09% (W/V) sodium azide. This antibody is purified through a protein A column, followed by peptide affinity purification. |
| Storage | Maintain refrigerated at 2-8°C for up to 2 weeks. For long term storage store at -20°C in small aliquots to prevent freeze-thaw cycles. |
| Precautions | PCTP Antibody (Center) is for research use only and not for use in diagnostic or therapeutic procedures. |

Protein Information

| | |
|-----------------|--|
| Name | PCTP |
| Synonyms | STARD2 |
| Function | Catalyzes the transfer of phosphatidylcholine between membranes. Binds a |

single lipid molecule.

Cellular Location

Cytoplasm {ECO:0000250 | UniProtKB:P53808}.

Tissue Location

Highest expression in liver, placenta, testis, kidney and heart. Low levels in brain and lung. No expression detected in thymus.

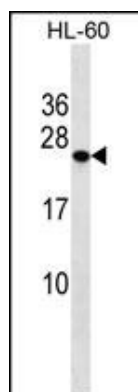
Background

PCTP catalyzes the transfer of phosphatidylcholine between membranes. Binds a single lipid molecule.

References

Talmud, P.J., et al. Am. J. Hum. Genet. 85(5):628-642(2009)
Kanno, K., et al. J. Biol. Chem. 282(42):30728-30736(2007)
Roderick, S.L., et al. Nat. Struct. Biol. 9(7):507-511(2002)
Chan, W.W., et al. Biochim. Biophys. Acta 1596(1):1-5(2002)
Cohen, D.E., et al. Biochim. Biophys. Acta 1447 (2-3), 265-270 (1999) :

Images



PCTP Antibody (Center) (Cat. #AP16620c) western blot analysis in HL-60 cell line lysates (35ug/lane). This demonstrates the PCTP antibody detected the PCTP protein (arrow).

Please note: All products are 'FOR RESEARCH USE ONLY. NOT FOR USE IN DIAGNOSTIC OR THERAPEUTIC PROCEDURES'.