

# BCAS1 Antibody (N-term)

Affinity Purified Rabbit Polyclonal Antibody (Pab)

Catalog # AP16632a

## Product Information

---

Application	WB, E
Primary Accession	<a href="#">O75363</a>
Other Accession	<a href="#">NP_003648.2</a>
Reactivity	Human
Host	Rabbit
Clonality	Polyclonal
Isotype	Rabbit IgG
Clone Names	RB36115
Calculated MW	61709
Antigen Region	1-30

## Additional Information

---

Gene ID	8537
Other Names	Breast carcinoma-amplified sequence 1, Amplified and overexpressed in breast cancer, Novel amplified in breast cancer 1, BCAS1, AIBC1, NABC1
Target/Specificity	This BCAS1 antibody is generated from rabbits immunized with a KLH conjugated synthetic peptide between 1-30 amino acids from the N-terminal region of human BCAS1.
Dilution	WB~~1:1000 E~~Use at an assay dependent concentration.
Format	Purified polyclonal antibody supplied in PBS with 0.09% (W/V) sodium azide. This antibody is purified through a protein A column, followed by peptide affinity purification.
Storage	Maintain refrigerated at 2-8°C for up to 2 weeks. For long term storage store at -20°C in small aliquots to prevent freeze-thaw cycles.
Precautions	BCAS1 Antibody (N-term) is for research use only and not for use in diagnostic or therapeutic procedures.

## Protein Information

---

Name	BCAS1
Synonyms	AIBC1, NABC1
Function	Required for myelination.

<b>Cellular Location</b>	Cytoplasm.
<b>Tissue Location</b>	Highly expressed in the brain and, more specifically, in oligodendrocytes (at protein level). Expressed in the prostate, and at lower levels in testis, intestine and colon Overexpressed in most breast cancer cell lines and down-regulated in some colorectal tumors.

## Background

---

This gene resides in a region at 20q13 which is amplified in a variety of tumor types and associated with more aggressive tumor phenotypes. Among the genes identified from this region, it was found to be highly expressed in three amplified breast cancer cell lines and in one breast tumor without amplification at 20q13.2. However, this gene is not in the common region of maximal amplification and its expression was not detected in the breast cancer cell line MCF7, in which this region is highly amplified. Although not consistently expressed, this gene is a candidate oncogene.

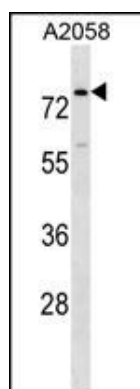
## References

---

Rose, J. Phd, et al. Mol. Med. (2010) In press :  
Ewing, R.M., et al. Mol. Syst. Biol. 3, 89 (2007) :  
Burmester, J.K., et al. Hum. Hered. 57(4):172-178(2004)  
Beardsley, D.I., et al. Exp. Cell Res. 290(2):402-413(2003)  
Deloukas, P., et al. Nature 414(6866):865-871(2001)

## Images

---



BCAS1 Antibody (N-term) (Cat. #AP16632a) western blot analysis in A2058 cell line lysates (35ug/lane). This demonstrates the BCAS1 antibody detected the BCAS1 protein (arrow).

Please note: All products are 'FOR RESEARCH USE ONLY. NOT FOR USE IN DIAGNOSTIC OR THERAPEUTIC PROCEDURES'.