

PLA2G12A Antibody (Center)

Affinity Purified Rabbit Polyclonal Antibody (Pab)

Catalog # AP16639c

Product Information

Application	WB, E
Primary Accession	Q9BZM1
Other Accession	NP_110448.2
Reactivity	Human
Host	Rabbit
Clonality	Polyclonal
Isotype	Rabbit IgG
Clone Names	RB36135
Calculated MW	21067
Antigen Region	55-83

Additional Information

Gene ID	81579
Other Names	Group XIIA secretory phospholipase A2, GXII sPLA2, sPLA2-XII, Phosphatidylcholine 2-acylhydrolase 12A, PLA2G12A, PLA2G12
Target/Specificity	This PLA2G12A antibody is generated from rabbits immunized with a KLH conjugated synthetic peptide between 55-83 amino acids from the Central region of human PLA2G12A.
Dilution	WB~~1:1000 E~~Use at an assay dependent concentration.
Format	Purified polyclonal antibody supplied in PBS with 0.09% (W/V) sodium azide. This antibody is purified through a protein A column, followed by peptide affinity purification.
Storage	Maintain refrigerated at 2-8°C for up to 2 weeks. For long term storage store at -20°C in small aliquots to prevent freeze-thaw cycles.
Precautions	PLA2G12A Antibody (Center) is for research use only and not for use in diagnostic or therapeutic procedures.

Protein Information

Name	PLA2G12A
Synonyms	PLA2G12
Function	PA2 catalyzes the calcium-dependent hydrolysis of the 2-acyl groups in

3-sn-phosphoglycerides. Does not exhibit detectable activity toward sn-2-arachidonoyl- or linoleoyl-phosphatidylcholine or -phosphatidylethanolamine.

Cellular Location

Secreted. Cytoplasm

Tissue Location

Abundantly expressed in heart, skeletal muscle, kidney, liver and pancreas

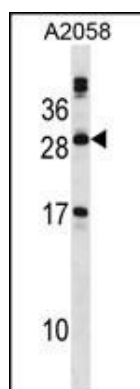
Background

Secreted phospholipase A2 (sPLA2) enzymes liberate arachidonic acid from phospholipids for production of eicosanoids and exert a variety of physiologic and pathologic effects. Group XII sPLA2s, such as PLA2G12A, have relatively low specific activity and are structurally and functionally distinct from other sPLA2s (Gelb et al., 2000 [PubMed 11031251]).

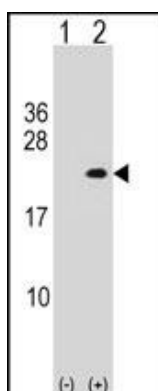
References

Bailey, S.D., et al. Diabetes Care 33(10):2250-2253(2010)
Kalsi, G., et al. Hum. Mol. Genet. 19(12):2497-2506(2010)
Chen, W., et al. Proc. Natl. Acad. Sci. U.S.A. 107(16):7401-7406(2010)
Hosgood, H.D. III, et al. Occup Environ Med 66(12):848-853(2009)
Talmud, P.J., et al. Am. J. Hum. Genet. 85(5):628-642(2009)

Images



PLA2G12A Antibody (Center) (Cat. #AP16639c) western blot analysis in A2058 cell line lysates (35ug/lane). This demonstrates the PLA2G12A antibody detected the PLA2G12A protein (arrow).



Western blot analysis of PLA2G12A (arrow) using rabbit polyclonal PLA2G12A Antibody (Center) (Cat. #AP16639c). 293 cell lysates (2 ug/lane) either nontransfected (Lane 1) or transiently transfected (Lane 2) with the PLA2G12A gene.

Please note: All products are 'FOR RESEARCH USE ONLY. NOT FOR USE IN DIAGNOSTIC OR THERAPEUTIC PROCEDURES'.