

## RRH Antibody (C-term)

Affinity Purified Rabbit Polyclonal Antibody (Pab)

Catalog # AP16644b

### Product Information

---

<b>Application</b>	WB, E
<b>Primary Accession</b>	<a href="#">O14718</a>
<b>Other Accession</b>	<a href="#">NP_006574.1</a>
<b>Reactivity</b>	Human
<b>Host</b>	Rabbit
<b>Clonality</b>	Polyclonal
<b>Isotype</b>	Rabbit IgG
<b>Clone Names</b>	RB36177
<b>Calculated MW</b>	37423
<b>Antigen Region</b>	213-240

### Additional Information

---

<b>Gene ID</b>	10692
<b>Other Names</b>	Visual pigment-like receptor peropsin, RRH
<b>Target/Specificity</b>	This RRH antibody is generated from rabbits immunized with a KLH conjugated synthetic peptide between 213-240 amino acids from the C-terminal region of human RRH.
<b>Dilution</b>	WB~~1:1000 E~~Use at an assay dependent concentration.
<b>Format</b>	Purified polyclonal antibody supplied in PBS with 0.09% (W/V) sodium azide. This antibody is purified through a protein A column, followed by peptide affinity purification.
<b>Storage</b>	Maintain refrigerated at 2-8°C for up to 2 weeks. For long term storage store at -20°C in small aliquots to prevent freeze-thaw cycles.
<b>Precautions</b>	RRH Antibody (C-term) is for research use only and not for use in diagnostic or therapeutic procedures.

### Protein Information

---

<b>Name</b>	RRH
<b>Function</b>	May play a role in rpe physiology either by detecting light directly or by monitoring the concentration of retinoids or other photoreceptor-derived compounds.

<b>Cellular Location</b>	Membrane; Multi-pass membrane protein
<b>Tissue Location</b>	Found only in the eye, where it is localized to the retinal pigment epithelium (RPE). In the RPE, it is localized to the microvilli that surround the photoreceptor outer segments

## Background

---

Opsins are members of the guanine nucleotide-binding protein (G protein)-coupled receptor superfamily. This gene belongs to the seven-exon subfamily of mammalian opsin genes that includes opsin 5 and retinal G protein coupled receptor. [provided by RefSeq].

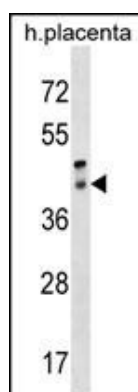
## References

---

Kalsi, G., et al. Hum. Mol. Genet. 19(12):2497-2506(2010)  
Luttrell, L.M. Mol. Biotechnol. 39(3):239-264(2008)  
Rivolta, C., et al. Mol. Vis. 12, 1511-1515 (2006) :  
Barrios-Rodiles, M., et al. Science 307(5715):1621-1625(2005)  
Bellingham, J., et al. BMC Genomics 4 (1), 3 (2003) :

## Images

---



RRH Antibody (C-term) (Cat. #AP16644b) western blot analysis in human placenta tissue lysates (35ug/lane). This demonstrates the RRH antibody detected the RRH protein (arrow).

Please note: All products are 'FOR RESEARCH USE ONLY. NOT FOR USE IN DIAGNOSTIC OR THERAPEUTIC PROCEDURES'.