

CCNG2 Antibody (Center)

Affinity Purified Rabbit Polyclonal Antibody (Pab)

Catalog # AP16698c

Product Information

Application	WB, E
Primary Accession	Q16589
Other Accession	NP_004345.1
Reactivity	Human
Host	Rabbit
Clonality	Polyclonal
Isotype	Rabbit IgG
Clone Names	RB35956
Calculated MW	38866
Antigen Region	215-243

Additional Information

Gene ID	901
Other Names	Cyclin-G2, CCNG2
Target/Specificity	This CCNG2 antibody is generated from rabbits immunized with a KLH conjugated synthetic peptide between 215-243 amino acids from the Central region of human CCNG2.
Dilution	WB~~1:1000 E~~Use at an assay dependent concentration.
Format	Purified polyclonal antibody supplied in PBS with 0.09% (W/V) sodium azide. This antibody is purified through a protein A column, followed by peptide affinity purification.
Storage	Maintain refrigerated at 2-8°C for up to 2 weeks. For long term storage store at -20°C in small aliquots to prevent freeze-thaw cycles.
Precautions	CCNG2 Antibody (Center) is for research use only and not for use in diagnostic or therapeutic procedures.

Protein Information

Name	CCNG2
Function	May play a role in growth regulation and in negative regulation of cell cycle progression.
Cellular Location	Cytoplasm.

Tissue Location

High levels in cerebellum, thymus, spleen and prostate. Low levels in skeletal muscle

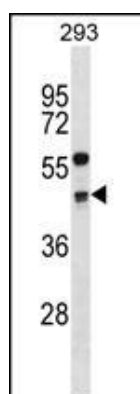
Background

The eukaryotic cell cycle is governed by cyclin-dependent protein kinases (CDKs) whose activities are regulated by cyclins and CDK inhibitors. The 8 species of cyclins reported in mammals, cyclins A through H, share a conserved amino acid sequence of about 90 residues called the cyclin box. The amino acid sequence of cyclin G is well conserved among mammals. The nucleotide sequence of cyclin G1 and cyclin G2 are 53% identical. Unlike cyclin G1, cyclin G2 contains a C-terminal PEST protein destabilization motif, suggesting that cyclin G2 expression is tightly regulated through the cell cycle.

References

Shimada, M., et al. Hum. Genet. 128(4):433-441(2010)
Choi, M.G., et al. J. Surg. Res. 157(2):168-174(2009)
Cunningham, J.M., et al. Br. J. Cancer 101(8):1461-1468(2009)
Xu, G., et al. Mol. Biol. Cell 19(11):4968-4979(2008)
Kasukabe, T., et al. Cancer Sci. 99(8):1693-1698(2008)

Images



CCNG2 Antibody (Center) (Cat. #AP16698c) western blot analysis in 293 cell line lysates (35ug/lane). This demonstrates the CCNG2 antibody detected the CCNG2 protein (arrow).

Please note: All products are 'FOR RESEARCH USE ONLY. NOT FOR USE IN DIAGNOSTIC OR THERAPEUTIC PROCEDURES'.