

USP17L2 Antibody (C-term)

Affinity Purified Rabbit Polyclonal Antibody (Pab)

Catalog # AP16721b

Product Information

Application	WB, E
Primary Accession	Q6R6M4
Other Accession	NP_958804.2
Reactivity	Human
Host	Rabbit
Clonality	Polyclonal
Isotype	Rabbit IgG
Calculated MW	59619
Antigen Region	476-503

Additional Information

Gene ID	377630
Other Names	Ubiquitin carboxyl-terminal hydrolase 17, USP17, Deubiquitinating enzyme 17-like protein 2, Deubiquitinating protein 3, DUB-3, Ubiquitin carboxyl-terminal hydrolase 17-like protein 2, Ubiquitin thioesterase 17-like protein 2, Ubiquitin-specific-processing protease 17-like protein 2, USP17L2
Target/Specificity	This USP17L2 antibody is generated from rabbits immunized with a KLH conjugated synthetic peptide between 476-503 amino acids from the C-terminal region of human USP17L2.
Dilution	WB~~1:1000 E~~Use at an assay dependent concentration.
Format	Purified polyclonal antibody supplied in PBS with 0.05% (V/V) Proclin 300. This antibody is prepared by Saturated Ammonium Sulfate (SAS) precipitation followed by dialysis against PBS.
Storage	Maintain refrigerated at 2-8°C for up to 2 weeks. For long term storage store at -20°C in small aliquots to prevent freeze-thaw cycles.
Precautions	USP17L2 Antibody (C-term) is for research use only and not for use in diagnostic or therapeutic procedures.

Protein Information

Name	USP17L2
Function	Deubiquitinating enzyme that removes conjugated ubiquitin from specific proteins to regulate different cellular processes. Regulates cell proliferation

by deubiquitinating and inhibiting RCE1 thereby controlling the small GTPases NRAS and HRAS localization and activation. In parallel, mediates deubiquitination of CDC25A, preventing CDC25A degradation by the proteasome during the G1/S and G2/M phases promoting cell-cycle progression. Also regulates cell proliferation and apoptosis through deubiquitination of SUDS3 a regulator of histone deacetylation. Through activation of the Rho family GTPases RAC1A, CDC42 and RHOA, regulates cell migration. Through the cleavage of 'Lys-48'- and 'Lys-63'-linked polyubiquitin chains of the cytoplasmic innate immune receptors RIGI and IFIH1 stimulates the cellular response to viral infection.

Cellular Location Nucleus. Endoplasmic reticulum

Tissue Location Broadly expressed..

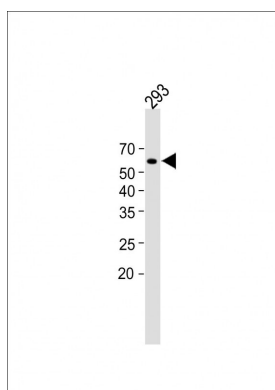
Background

DUB3 is a member of the ubiquitin processing protease (UBP) subfamily of deubiquitinating enzymes. See USP1 (MIM 603478) for background information.

References

Pereg, Y., et al. Nat. Cell Biol. 12(4):400-406(2010)
Alkan, C., et al. Nat. Genet. 41(10):1061-1067(2009)
Burrows, J.F., et al. J. Biol. Chem. 279(14):13993-14000(2004)

Images



All lanes : Anti-USP17L2 Antibody (C-term) at 1:1000 dilution
Lane 1: 293 whole cell lysate Lysates/proteins at 20 µg per lane. Secondary Goat Anti-Rabbit IgG, (H+L), Peroxidase conjugated (ASP1615) at 1/15000 dilution. Observed band size : 62kDa Blocking/Dilution buffer: 5% NFDM/TBST.

Please note: All products are 'FOR RESEARCH USE ONLY. NOT FOR USE IN DIAGNOSTIC OR THERAPEUTIC PROCEDURES'.