

# TEKT1 Antibody (Center)

Affinity Purified Rabbit Polyclonal Antibody (Pab)

Catalog # AP16728c

## Product Information

---

Application	WB, E
Primary Accession	<a href="#">Q969V4</a>
Other Accession	<a href="#">NP_444515.1</a>
Reactivity	Human
Host	Rabbit
Clonality	Polyclonal
Isotype	Rabbit IgG
Clone Names	RB36256
Calculated MW	48283
Antigen Region	252-281

## Additional Information

---

Gene ID	83659
Other Names	Tektin-1, TEKT1
Target/Specificity	This TEKT1 antibody is generated from rabbits immunized with a KLH conjugated synthetic peptide between 252-281 amino acids from the Central region of human TEKT1.
Dilution	WB~~1:1000 E~~Use at an assay dependent concentration.
Format	Purified polyclonal antibody supplied in PBS with 0.09% (W/V) sodium azide. This antibody is purified through a protein A column, followed by peptide affinity purification.
Storage	Maintain refrigerated at 2-8°C for up to 2 weeks. For long term storage store at -20°C in small aliquots to prevent freeze-thaw cycles.
Precautions	TEKT1 Antibody (Center) is for research use only and not for use in diagnostic or therapeutic procedures.

## Protein Information

---

Name	TEKT1
Function	Microtubule inner protein (MIP) part of the dynein-decorated doublet microtubules (DMTs) in cilia and flagellar axoneme. Forms filamentous polymers in the walls of ciliary and flagellar microtubules.

<b>Cellular Location</b>	Cytoplasm, cytoskeleton, cilium axoneme. Cytoplasm, cytoskeleton, flagellum axoneme {ECO:0000250   UniProtKB:Q32KZ9}
<b>Tissue Location</b>	Predominantly expressed in testis. Expressed in airway epithelial cells (PubMed:36191189)

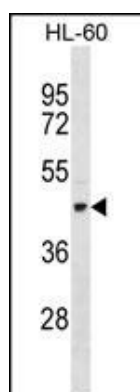
## Background

This gene product belongs to the tektin family of proteins. Tektins comprise a family of filament-forming proteins that are coassembled with tubulins to form ciliary and flagellar microtubules. This gene is predominantly expressed in the testis and in mouse, tektin 1 mRNA was localized to the spermatocytes and round spermatids in the seminiferous tubules, indicating that it may play a role in spermatogenesis.

## References

Newby, P.R., et al. Eur. J. Hum. Genet. 18(9):1021-1026(2010)  
 Rose, J.E., et al. Mol. Med. 16 (7-8), 247-253 (2010) :  
 Iguchi, N., et al. Mol. Hum. Reprod. 8(6):525-530(2002)  
 Xu, M., et al. Int. J. Biochem. Cell Biol. 33(12):1172-1182(2001)

## Images



TEKT1 Antibody (Center) (Cat. #AP16728c) western blot analysis in HL-60 cell line lysates (35ug/lane). This demonstrates the TEKT1 antibody detected the TEKT1 protein (arrow).

Please note: All products are 'FOR RESEARCH USE ONLY. NOT FOR USE IN DIAGNOSTIC OR THERAPEUTIC PROCEDURES'.