

# PRDM8 Antibody (N-term)

Affinity Purified Rabbit Polyclonal Antibody (Pab)

Catalog # AP16736a

## Product Information

---

Application	WB, E
Primary Accession	<a href="#">Q9NQV8</a>
Other Accession	<a href="#">Q8BZ97</a> , <a href="#">NP_001092873.1</a> , <a href="#">NP_064611.3</a>
Reactivity	Human
Predicted	Mouse
Host	Rabbit
Clonality	Polyclonal
Isotype	Rabbit IgG
Clone Names	RB36275
Calculated MW	71663
Antigen Region	75-102

## Additional Information

---

Gene ID	56978
Other Names	PR domain zinc finger protein 8, 211-, PR domain-containing protein 8, PRDM8, PFM5
Target/Specificity	This PRDM8 antibody is generated from rabbits immunized with a KLH conjugated synthetic peptide between 75-102 amino acids from the N-terminal region of human PRDM8.
Dilution	WB~~1:1000 E~~Use at an assay dependent concentration.
Format	Purified polyclonal antibody supplied in PBS with 0.09% (W/V) sodium azide. This antibody is purified through a protein A column, followed by peptide affinity purification.
Storage	Maintain refrigerated at 2-8°C for up to 2 weeks. For long term storage store at -20°C in small aliquots to prevent freeze-thaw cycles.
Precautions	PRDM8 Antibody (N-term) is for research use only and not for use in diagnostic or therapeutic procedures.

## Protein Information

---

Name	PRDM8
Synonyms	PFM5

<b>Function</b>	Probable histone methyltransferase, preferentially acting on 'Lys-9' of histone H3 (By similarity). Involved in the control of steroidogenesis through transcriptional repression of steroidogenesis marker genes such as CYP17A1 and LHCGR (By similarity). Forms with BHLHE22 a transcriptional repressor complex controlling genes involved in neural development and neuronal differentiation (By similarity). In the retina, it is required for rod bipolar and type 2 OFF-cone bipolar cell survival (By similarity).
<b>Cellular Location</b>	Nucleus.
<b>Tissue Location</b>	Expressed in brain, heart, skeletal muscle, testes, prostate.

## Background

---

PRDM8 may be involved in transcriptional regulation.

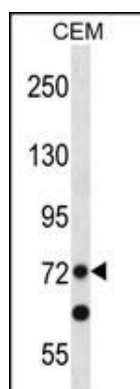
## References

---

Newton-Cheh, C., et al. Nat. Genet. (2009) In press :  
Xiao, B., et al. Curr. Opin. Struct. Biol. 13(6):699-705(2003)  
Jiang, G.L., et al. Histol. Histopathol. 15(1):109-117(2000)

## Images

---



PRDM8 Antibody (N-term) (Cat. #AP16736a) western blot analysis in CEM cell line lysates (35ug/lane). This demonstrates the PRDM8 antibody detected the PRDM8 protein (arrow).

Please note: All products are 'FOR RESEARCH USE ONLY. NOT FOR USE IN DIAGNOSTIC OR THERAPEUTIC PROCEDURES'.