

ARHGEF6 Antibody (C-term)

Affinity Purified Rabbit Polyclonal Antibody (Pab)
Catalog # AP16738b

Product Information

| | |
|--------------------------|-----------------------------|
| Application | WB, E |
| Primary Accession | Q15052 |
| Other Accession | NP_004831.1 |
| Reactivity | Human |
| Host | Rabbit |
| Clonality | Polyclonal |
| Isotype | Rabbit IgG |
| Clone Names | RB36291 |
| Calculated MW | 87499 |
| Antigen Region | 614-641 |

Additional Information

| | |
|---------------------------|--|
| Gene ID | 9459 |
| Other Names | Rho guanine nucleotide exchange factor 6, Alpha-Pix, COOL-2, PAK-interacting exchange factor alpha, Rac/Cdc42 guanine nucleotide exchange factor 6, ARHGEF6, COOL2, KIAA0006, PIXA |
| Target/Specificity | This ARHGEF6 antibody is generated from rabbits immunized with a KLH conjugated synthetic peptide between 614-641 amino acids from the C-terminal region of human ARHGEF6. |
| Dilution | WB~~1:1000 E~~Use at an assay dependent concentration. |
| Format | Purified polyclonal antibody supplied in PBS with 0.09% (W/V) sodium azide. This antibody is purified through a protein A column, followed by peptide affinity purification. |
| Storage | Maintain refrigerated at 2-8°C for up to 2 weeks. For long term storage store at -20°C in small aliquots to prevent freeze-thaw cycles. |
| Precautions | ARHGEF6 Antibody (C-term) is for research use only and not for use in diagnostic or therapeutic procedures. |

Protein Information

| | |
|-----------------|-----------------------|
| Name | ARHGEF6 |
| Synonyms | COOL2, KIAA0006, PIXA |

| | |
|--------------------------|---|
| Function | Acts as a RAC1 guanine nucleotide exchange factor (GEF). |
| Cellular Location | Cell projection, lamellipodium {ECO:0000250 UniProtKB:Q8K4I3} |
| Tissue Location | Ubiquitous. |

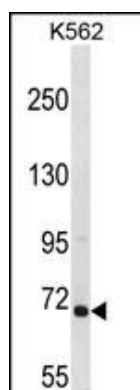
Background

Rho GTPases play a fundamental role in numerous cellular processes that are initiated by extracellular stimuli that work through G protein coupled receptors. The encoded protein belongs to a family of cytoplasmic proteins that activate the Ras-like family of Rho proteins by exchanging bound GDP for GTP. It may form a complex with G proteins and stimulate Rho-dependent signals. This protein is activated by PI3-kinase. Mutations in this gene can cause X-chromosomal non-specific mental retardation. [provided by RefSeq].

References

- Maiti, A.K. Pharmacogenomics J. 10(2):94-104(2010)
Eriguchi, M., et al. J. Neurol. Sci. 290 (1-2), 80-85 (2010) :
Takefuji, M., et al. J. Hum. Genet. 55(1):42-49(2010)
Lim, J.W., et al. Scand. J. Gastroenterol. 44(10):1166-1172(2009)
Baek, H.Y., et al. Ann. N. Y. Acad. Sci. 1096, 18-23 (2007) :

Images



ARHGEF6 Antibody (C-term) (Cat. #AP16738b) western blot analysis in K562 cell line lysates (35ug/lane). This demonstrates the ARHGEF6 antibody detected the ARHGEF6 protein (arrow).

Please note: All products are 'FOR RESEARCH USE ONLY. NOT FOR USE IN DIAGNOSTIC OR THERAPEUTIC PROCEDURES'.