

GREB1 Antibody (Center)

Affinity Purified Rabbit Polyclonal Antibody (Pab)

Catalog # AP16749c

Product Information

Application	WB, E
Primary Accession	Q4ZG55
Other Accession	Q3UHK3 , NP_055483.2 , NP_149081.1
Reactivity	Human, Mouse
Host	Rabbit
Clonality	Polyclonal
Isotype	Rabbit IgG
Clone Names	RB36491
Calculated MW	216467
Antigen Region	1417-1446

Additional Information

Gene ID	9687
Other Names	Protein GREB1, Gene regulated in breast cancer 1 protein, GREB1, KIAA0575
Target/Specificity	This GREB1 antibody is generated from rabbits immunized with a KLH conjugated synthetic peptide between 1417-1446 amino acids from the Central region of human GREB1.
Dilution	WB~~1:1000 E~~Use at an assay dependent concentration.
Format	Purified polyclonal antibody supplied in PBS with 0.09% (W/V) sodium azide. This antibody is purified through a protein A column, followed by peptide affinity purification.
Storage	Maintain refrigerated at 2-8°C for up to 2 weeks. For long term storage store at -20°C in small aliquots to prevent freeze-thaw cycles.
Precautions	GREB1 Antibody (Center) is for research use only and not for use in diagnostic or therapeutic procedures.

Protein Information

Name	GREB1
Synonyms	KIAA0575
Function	May play a role in estrogen-stimulated cell proliferation. Acts as a regulator of hormone-dependent cancer growth in breast and prostate cancers.

Cellular Location	Membrane; Single-pass membrane protein
Tissue Location	Expressed in proliferating prostatic tissue and prostate cancer.

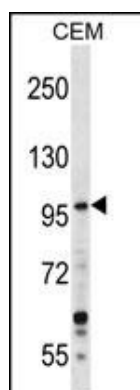
Background

This gene is an estrogen-responsive gene that is an early response gene in the estrogen receptor-regulated pathway. It is thought to play an important role in hormone-responsive tissues and cancer. Three alternatively spliced transcript variants encoding distinct isoforms have been found for this gene. [provided by RefSeq].

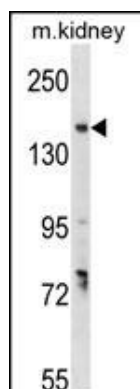
References

Hnatyszyn, H.J., et al. Breast Cancer Res. Treat. 122(2):371-380(2010)
 Trynka, G., et al. Gut 58(8):1078-1083(2009)
 Rittie, L., et al. Arch Dermatol 144(9):1129-1140(2008)
 Sun, J., et al. Mol. Endocrinol. 21(11):2651-2662(2007)
 Deschenes, J., et al. J. Biol. Chem. 282(24):17335-17339(2007)

Images



GREB1 Antibody (Cat. #AP16749c) western blot analysis in CEM cell line lysates (35ug/lane). This demonstrates the GREB1 antibody detected the GREB1 protein (arrow).



GREB1 Antibody (Cat. #AP16749c) western blot analysis in mouse kidney tissue lysates (35ug/lane). This demonstrates the GREB1 antibody detected the GREB1 protein (arrow).

Please note: All products are 'FOR RESEARCH USE ONLY. NOT FOR USE IN DIAGNOSTIC OR THERAPEUTIC PROCEDURES'.