

LCN8 Antibody (C-term)

Affinity Purified Rabbit Polyclonal Antibody (Pab)

Catalog # AP16750b

Product Information

Application	WB, E
Primary Accession	Q6JVE9
Other Accession	NP_848564.2
Reactivity	Human
Host	Rabbit
Clonality	Polyclonal
Isotype	Rabbit IgG
Clone Names	RB36498
Calculated MW	19080
Antigen Region	111-140

Additional Information

Gene ID	138307
Other Names	Epididymal-specific lipocalin-8, LCN8, LCN5
Target/Specificity	This LCN8 antibody is generated from rabbits immunized with a KLH conjugated synthetic peptide between 111-140 amino acids from the C-terminal region of human LCN8.
Dilution	WB~~1:1000 E~~Use at an assay dependent concentration.
Format	Purified polyclonal antibody supplied in PBS with 0.09% (W/V) sodium azide. This antibody is purified through a protein A column, followed by peptide affinity purification.
Storage	Maintain refrigerated at 2-8°C for up to 2 weeks. For long term storage store at -20°C in small aliquots to prevent freeze-thaw cycles.
Precautions	LCN8 Antibody (C-term) is for research use only and not for use in diagnostic or therapeutic procedures.

Protein Information

Name	LCN8
Synonyms	LCN5
Function	May play a role in male fertility. May act as a retinoid carrier protein within the epididymis.

Background

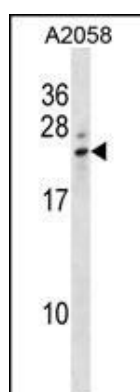
Members of the lipocalin family, such as LCN8, have a common structure consisting of an 8-stranded antiparallel beta-barrel that forms a cup-shaped ligand-binding pocket or calyx. Lipocalins generally bind small hydrophobic ligands and transport them to specific cells (Suzuki et al., 2004 [PubMed 15363845]).

References

Suzuki, K., et al. Gene 339, 49-59 (2004) :

Humphray, S.J., et al. Nature 429(6990):369-374(2004)

Images



LCN8 Antibody (C-term) (Cat. #AP16750b) western blot analysis in A2058 cell line lysates (35ug/lane). This demonstrates the LCN8 antibody detected the LCN8 protein (arrow).

Please note: All products are 'FOR RESEARCH USE ONLY. NOT FOR USE IN DIAGNOSTIC OR THERAPEUTIC PROCEDURES'.