

PRL Antibody (Center)

Affinity Purified Rabbit Polyclonal Antibody (Pab)

Catalog # AP16751c

Product Information

Application	IHC-P, WB, E
Primary Accession	P01236
Other Accession	NP_001157030.1 , NP_000939.1
Reactivity	Human
Host	Rabbit
Clonality	Polyclonal
Isotype	Rabbit IgG
Clone Names	RB36501
Calculated MW	25876
Antigen Region	48-76

Additional Information

Gene ID	5617
Other Names	Prolactin, PRL, PRL
Target/Specificity	This PRL antibody is generated from rabbits immunized with a KLH conjugated synthetic peptide between 48-76 amino acids from the Central region of human PRL.
Dilution	IHC-P~~1:100 WB~~1:1000 E~~Use at an assay dependent concentration.
Format	Purified polyclonal antibody supplied in PBS with 0.09% (W/V) sodium azide. This antibody is purified through a protein A column, followed by peptide affinity purification.
Storage	Maintain refrigerated at 2-8°C for up to 2 weeks. For long term storage store at -20°C in small aliquots to prevent freeze-thaw cycles.
Precautions	PRL Antibody (Center) is for research use only and not for use in diagnostic or therapeutic procedures.

Protein Information

Name	PRL
Function	Prolactin acts primarily on the mammary gland by promoting lactation.
Cellular Location	Secreted.

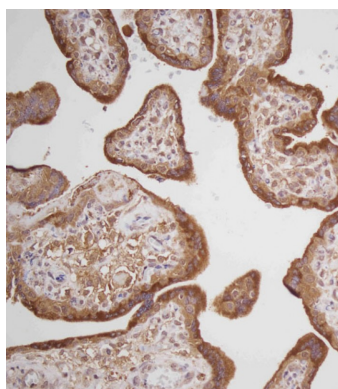
Background

PRL prolactin acts primarily on the mammary gland by promoting lactation.

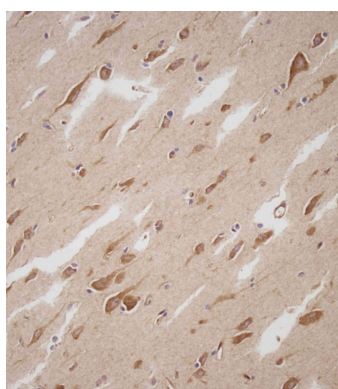
References

Ucisik-Akkaya, E., et al. Mol. Hum. Reprod. 16(10):770-777(2010)
Strauss, J.S., et al. Psychoneuroendocrinology 35(9):1422-1428(2010)
Gordon, I., et al. Horm Behav 58(3):513-518(2010)
Voorhees, J.L., et al. J. Biol. Chem. 285(26):20022-20030(2010)
Yokoyama, K., et al. Nephron Clin Pract 115 (4), C237-C243 (2010) :

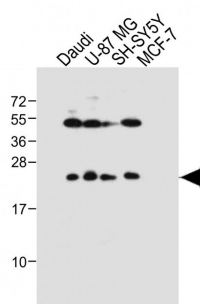
Images



Immunohistochemical analysis of AP16751C on paraffin-embedded Human placenta tissue. Tissue was fixed with formaldehyde at room temperature. Heat induced epitope retrieval was performed by EDTA buffer (pH9. 0). Samples were incubated with primary antibody(1:100) for 1 hour at room temperature. Undiluted CRF Anti-Polyvalent HRP Polymer antibody was used as the secondary antibody.



Immunohistochemical analysis of AP16751C on paraffin-embedded Human brain tissue. Tissue was fixed with formaldehyde at room temperature. Heat induced epitope retrieval was performed by EDTA buffer (pH9. 0). Samples were incubated with primary antibody(1:100) for 1 hour at room temperature. Undiluted CRF Anti-Polyvalent HRP Polymer antibody was used as the secondary antibody.



All lanes : Anti-PRL Antibody (Center) at 1:1000 dilution
Lane 1: Daudi whole cell lysate Lane 2: U-87 MG whole cell lysate Lane 3: SH-SY5Y whole cell lysate Lane 4: MCF-7 whole cell lysate Lysates/proteins at 20 µg per lane. Secondary Goat Anti-Rabbit IgG, (H+L), Peroxidase conjugated at 1/10000 dilution. Predicted band size : 26 kDa Blocking/Dilution buffer: 5% NFDM/TBST.

Please note: All products are 'FOR RESEARCH USE ONLY. NOT FOR USE IN DIAGNOSTIC OR THERAPEUTIC PROCEDURES'.