

SEMA4A Antibody (N-term)

Affinity Purified Rabbit Polyclonal Antibody (Pab)
Catalog # AP16778a

Product Information

Application	WB, E
Primary Accession	Q9H3S1
Other Accession	NP_001180230.1 , NP_001180229.1
Reactivity	Human, Mouse
Host	Rabbit
Clonality	Polyclonal
Isotype	Rabbit IgG
Clone Names	RB35876
Antigen Region	151-180

Additional Information

Other Names	Semaphorin-4A, Semaphorin-B, Sema B, SEMA4A, SEMAB, SEMB
Target/Specificity	This SEMA4A antibody is generated from rabbits immunized with a KLH conjugated synthetic peptide between 151-180 amino acids from the N-terminal region of human SEMA4A.
Dilution	WB~~1:1000 E~~Use at an assay dependent concentration.
Format	Purified polyclonal antibody supplied in PBS with 0.09% (W/V) sodium azide. This antibody is purified through a protein A column, followed by peptide affinity purification.
Storage	Maintain refrigerated at 2-8°C for up to 2 weeks. For long term storage store at -20°C in small aliquots to prevent freeze-thaw cycles.
Precautions	SEMA4A Antibody (N-term) is for research use only and not for use in diagnostic or therapeutic procedures.

Protein Information

Background

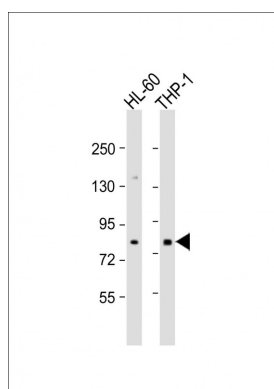
This gene encodes a member of the semaphorin family of soluble and transmembrane proteins. Semaphorins are involved in numerous functions, including axon guidance, morphogenesis, carcinogenesis, and immunomodulation. The encoded protein is a single-pass type I membrane protein containing an immunoglobulin-like C2-type domain, a PSI domain and a sema domain. It inhibits axonal extension by providing local signals to specify territories inaccessible for growing axons. It is an activator of T-cell-mediated immunity and suppresses vascular endothelial growth factor (VEGF)-mediated endothelial

cell migration and proliferation in vitro and angiogenesis in vivo. Mutations in this gene are associated with retinal degenerative diseases including retinitis pigmentosa type 35 (RP35) and cone-rod dystrophy type 10 (CORD10). Multiple alternatively spliced transcript variants encoding different isoforms have been identified.

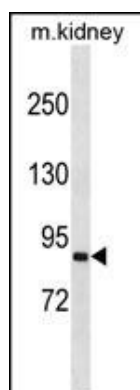
References

Davila, S., et al. *Genes Immun.* 11(3):232-238(2010)
Schmidt-Kastner, R., et al. *Mol. Vis.* 14, 125-135 (2008) :
Toyofuku, T., et al. *EMBO J.* 26(5):1373-1384(2007)
Abid, A., et al. *J. Med. Genet.* 43(4):378-381(2006)
Kumanogoh, A., et al. *J. Cell. Sci.* 116 (PT 17), 3463-3470 (2003) :

Images



All lanes : Anti-SEMA4A Antibody (N-term) at 1:500 dilution
Lane 1: HL-60 whole cell lysate
Lane 2: THP-1 whole cell lysate
Lysates/proteins at 20 µg per lane.
Secondary Goat Anti-Rabbit IgG, (H+L), Peroxidase conjugated at 1/10000 dilution. Predicted band size : 84 kDa
Blocking/Dilution buffer: 5% NFDM/TBST.



SEMA4A Antibody (N-term) (Cat. #AP16778a) western blot analysis in mouse kidney tissue lysates (35ug/lane). This demonstrates the SEMA4A antibody detected the SEMA4A protein (arrow).

Please note: All products are 'FOR RESEARCH USE ONLY. NOT FOR USE IN DIAGNOSTIC OR THERAPEUTIC PROCEDURES'.