

# LY6G6F Antibody (N-term)

Affinity Purified Rabbit Polyclonal Antibody (Pab)

Catalog # AP16806A

## Product Information

---

Application	WB, E
Primary Accession	<a href="#">Q5SQ64</a>
Other Accession	<a href="#">NP_001003693.1</a>
Reactivity	Human
Host	Rabbit
Clonality	Polyclonal
Isotype	Rabbit IgG
Clone Names	RB36393
Calculated MW	32465
Antigen Region	56-84

## Additional Information

---

Gene ID	259215
Other Names	Lymphocyte antigen 6 complex locus protein G6f, LY6G6F, C6orf21, G6F, LY6G6D, NG32
Target/Specificity	This LY6G6F antibody is generated from rabbits immunized with a KLH conjugated synthetic peptide between 56-84 amino acids from the N-terminal region of human LY6G6F.
Dilution	WB~~1:1000 E~~Use at an assay dependent concentration.
Format	Purified polyclonal antibody supplied in PBS with 0.09% (W/V) sodium azide. This antibody is purified through a protein A column, followed by peptide affinity purification.
Storage	Maintain refrigerated at 2-8°C for up to 2 weeks. For long term storage store at -20°C in small aliquots to prevent freeze-thaw cycles.
Precautions	LY6G6F Antibody (N-term) is for research use only and not for use in diagnostic or therapeutic procedures.

## Protein Information

---

Name	LY6G6F
Synonyms	C6orf21, G6F, LY6G6D, NG32
Function	May play a role in the downstream signal transduction pathways involving

GRB2 and GRB7.

## Cellular Location

Cell membrane; Single-pass type I membrane protein

## Background

The human G6f protein is a type I transmembrane protein belonging to the immunoglobulin (Ig) superfamily, which is comprised of cell-surface proteins involved in the immune system and cellular recognition (de Vet et al., 2003 [PubMed 12852788]).[supplied by OMIM].

## References

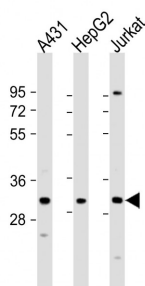
Ucisk-Akkaya, E., et al. Mol. Hum. Reprod. 16(10):770-777(2010)

Barcellos, L.F., et al. PLoS Genet. 5 (10), E1000696 (2009) :

De Vet, E.C., et al. Biochem. J. 375 (PT 1), 207-213 (2003) :

De Vet, E.C., et al. Biochem. J. 375 (PT 1), 207-213 (2003) :

## Images



All lanes : Anti-LY6G6F Antibody (N-term) at 1:1000 dilution  
Lane 1: A431 whole cell lysate  
Lane 2: HepG2 whole cell lysate  
Lane 3: Jurkat whole cell lysate  
Lysates/proteins at 20 µg per lane. Secondary Goat Anti-Rabbit IgG, (H+L), Peroxidase conjugated at 1/10000 dilution. Predicted band size : 32 kDa  
Blocking/Dilution buffer: 5% NFDM/TBST.

Please note: All products are 'FOR RESEARCH USE ONLY. NOT FOR USE IN DIAGNOSTIC OR THERAPEUTIC PROCEDURES'.