

MEX3B Antibody (N-term)

Affinity Purified Rabbit Polyclonal Antibody (Pab)

Catalog # AP16808a

Product Information

| | |
|-------------------|--|
| Application | WB, E |
| Primary Accession | Q6ZN04 |
| Other Accession | Q69Z36 , NP_115622.2 |
| Reactivity | Human |
| Predicted | Mouse |
| Host | Rabbit |
| Clonality | Polyclonal |
| Isotype | Rabbit IgG |
| Clone Names | RB36398 |
| Calculated MW | 58832 |
| Antigen Region | 37-65 |

Additional Information

| | |
|--------------------|---|
| Gene ID | 84206 |
| Other Names | RNA-binding protein MEX3B, RING finger and KH domain-containing protein 3, RING finger protein 195, MEX3B, KIAA2009, RKHD3, RNF195 |
| Target/Specificity | This MEX3B antibody is generated from rabbits immunized with a KLH conjugated synthetic peptide between 37-65 amino acids from the N-terminal region of human MEX3B. |
| Dilution | WB~~1:1000 E~~Use at an assay dependent concentration. |
| Format | Purified polyclonal antibody supplied in PBS with 0.05% (V/V) Proclin 300. This antibody is purified through a protein A column, followed by peptide affinity purification. |
| Storage | Maintain refrigerated at 2-8°C for up to 2 weeks. For long term storage store at -20°C in small aliquots to prevent freeze-thaw cycles. |
| Precautions | MEX3B Antibody (N-term) is for research use only and not for use in diagnostic or therapeutic procedures. |

Protein Information

| | |
|----------|-------------------------|
| Name | MEX3B |
| Synonyms | KIAA2009, RKHD3, RNF195 |

| | |
|--------------------------|--|
| Function | RNA-binding protein. May be involved in post-transcriptional regulatory mechanisms. |
| Cellular Location | Nucleus. Cytoplasm. Cytoplasm, P-body. Cytoplasmic granule. Note=Predominantly expressed in the cytoplasm and shuttles between the cytoplasm and the nucleus through the CRM1 export pathway. Localization to P-bodies is dependent on 14-3-3 |
| Tissue Location | Highest levels found in fetal brain and testis. Detected in the adult intestinal epithelium, specifically in goblet cell at protein level. |

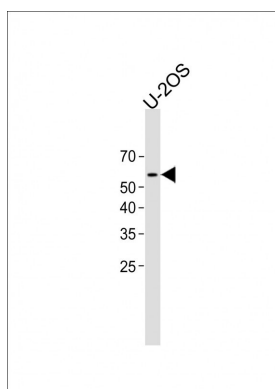
Background

RNA-binding protein. May be involved in post-transcriptional regulatory mechanisms.

References

Nicolas, E., et al. Eur. J. Hum. Genet. 18(10):1107-1113(2010)
 Willer, C.J., et al. Nat. Genet. 41(1):25-34(2009)
 Courchet, J., et al. J. Biol. Chem. 283(46):32131-32142(2008)
 Buchet-Poyau, K., et al. Nucleic Acids Res. 35(4):1289-1300(2007)
 Barrios-Rodiles, M., et al. Science 307(5715):1621-1625(2005)

Images



All lanes: Anti-MEX3B Antibody (N-term) at 1:1000 dilution + U-2OS whole cell lysate Lysates/proteins at 20 µg per lane. Secondary: Goat Anti-Rabbit IgG, (H+L), Peroxidase conjugated (ASP1615) at 1/15000 dilution. Observed band size: 59 KDa Blocking/Dilution buffer: 5% NFDm/TBST.

Please note: All products are 'FOR RESEARCH USE ONLY. NOT FOR USE IN DIAGNOSTIC OR THERAPEUTIC PROCEDURES'.