

RCBTB1 Antibody (Center)

Affinity Purified Rabbit Polyclonal Antibody (Pab)

Catalog # AP16817c

Product Information

Application	WB, E
Primary Accession	Q8NDN9
Other Accession	NP_060661.3
Reactivity	Human
Host	Rabbit
Clonality	Polyclonal
Isotype	Rabbit IgG
Clone Names	RB36517
Calculated MW	58252
Antigen Region	350-377

Additional Information

Gene ID	55213
Other Names	RCC1 and BTB domain-containing protein 1, Chronic lymphocytic leukemia deletion region gene 7 protein, CLL deletion region gene 7 protein, Regulator of chromosome condensation and BTB domain-containing protein 1, RCBTB1, CLLD7, E45
Target/Specificity	This RCBTB1 antibody is generated from rabbits immunized with a KLH conjugated synthetic peptide between 350-377 amino acids from the Central region of human RCBTB1.
Dilution	WB~~1:1000 E~~Use at an assay dependent concentration.
Format	Purified polyclonal antibody supplied in PBS with 0.09% (W/V) sodium azide. This antibody is purified through a protein A column, followed by peptide affinity purification.
Storage	Maintain refrigerated at 2-8°C for up to 2 weeks. For long term storage store at -20°C in small aliquots to prevent freeze-thaw cycles.
Precautions	RCBTB1 Antibody (Center) is for research use only and not for use in diagnostic or therapeutic procedures.

Protein Information

Name	RCBTB1
Synonyms	CLLD7, E4.5

Function	May be involved in cell cycle regulation by chromatin remodeling.
Cellular Location	Nucleus.
Tissue Location	Ubiquitously expressed (PubMed:11306461, PubMed:27486781). In the retina, present in the nerve fiber layer and to a lesser extent in the inner and outer plexiform layers (at protein level) (PubMed:27486781).

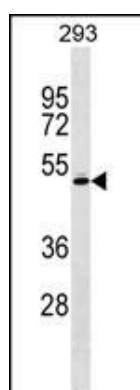
Background

This gene encodes a protein with an N-terminal RCC1 domain and a C-terminal BTB (broad complex, tramtrack and bric-a-brac) domain. In rat, over-expression of this gene in vascular smooth muscle cells induced cellular hypertrophy. In rat, the C-terminus of RCBTB1 interacts with the angiotensin II receptor-1A. In humans, this gene maps to a region of chromosome 13q that is frequently deleted in B-cell chronic lymphocytic leukemia and other lymphoid malignancies.

References

Genuneit, J., et al. Clin. Exp. Allergy 39(12):1875-1888(2009)
Guo, D.F., et al. J. Biol. Chem. 279(20):21109-21120(2004)
Dunham, A., et al. Nature 428(6982):522-528(2004)
Solomou, E.E., et al. Leuk. Lymphoma 44(9):1579-1585(2003)
Mabuchi, H., et al. Cancer Res. 61(7):2870-2877(2001)

Images



RCBTB1 Antibody (Center) (Cat. #AP16817c) western blot analysis in 293 cell line lysates (35ug/lane). This demonstrates the RCBTB1 antibody detected the RCBTB1 protein (arrow).

Please note: All products are 'FOR RESEARCH USE ONLY. NOT FOR USE IN DIAGNOSTIC OR THERAPEUTIC PROCEDURES'.