

PLEKHF2 Antibody (Center)

Affinity Purified Rabbit Polyclonal Antibody (Pab)

Catalog # AP16820c

Product Information

Application	WB, E
Primary Accession	Q9H8W4
Other Accession	NP_078889.1
Reactivity	Human
Host	Rabbit
Clonality	Polyclonal
Isotype	Rabbit IgG
Clone Names	RB36531
Calculated MW	27798
Antigen Region	71-98

Additional Information

Gene ID	79666
Other Names	Pleckstrin homology domain-containing family F member 2, PH domain-containing family F member 2, Endoplasmic reticulum-associated apoptosis-involved protein containing PH and FYVE domains, EAPF, PH and FYVE domain-containing protein 2, Phafin-2, Phafin2, Zinc finger FYVE domain-containing protein 18, PLEKHF2, ZFYVE18
Target/Specificity	This PLEKHF2 antibody is generated from rabbits immunized with a KLH conjugated synthetic peptide between 71-98 amino acids from the Central region of human PLEKHF2.
Dilution	WB~~1:1000 E~~Use at an assay dependent concentration.
Format	Purified polyclonal antibody supplied in PBS with 0.09% (W/V) sodium azide. This antibody is purified through a protein A column, followed by peptide affinity purification.
Storage	Maintain refrigerated at 2-8°C for up to 2 weeks. For long term storage store at -20°C in small aliquots to prevent freeze-thaw cycles.
Precautions	PLEKHF2 Antibody (Center) is for research use only and not for use in diagnostic or therapeutic procedures.

Protein Information

Name	PLEKHF2
-------------	---------

Synonyms	ZFYVE18
Function	May play a role in early endosome fusion upstream of RAB5, hence regulating receptor trafficking and fluid-phase transport. Enhances cellular sensitivity to TNF-induced apoptosis (PubMed: 18288467).
Cellular Location	Early endosome membrane; Peripheral membrane protein. Endoplasmic reticulum. Note=Colocalizes with EEA1 and RAB5 at endosomal membrane fusion hot spots (PubMed:19995552). May translocate to the endoplasmic reticulum in the early phase of apoptosis (PubMed:18288467).
Tissue Location	Expressed in placenta, ovary and small intestine, as well as in heart and pancreas. Also expressed in peripheral blood mononuclear cells and dendritic cells.

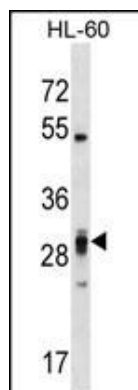
Background

PLEKHF2 (Phafin 2) is a PH and FYVE domain containing protein 2. The FYVE domain and Zinc binding domain targets proteins to membrane lipids via interaction with phosphatidylinositol 3 phosphate, PI3P. The FYVE domain and Zinc binding domain present in Fab1, YOTB, Vac1, and EEA1.

References

Lin, W.J., et al. Biochem. Biophys. Res. Commun. 391(1):1043-1048(2010)
 Li, C., et al. J. Mol. Med. 86(4):471-484(2008)
 Olsen, J.V., et al. Cell 127(3):635-648(2006)

Images



PLEKHF2 Antibody (Center) (Cat. #AP16820c) western blot analysis in HL-60 cell line lysates (35ug/lane). This demonstrates the PLEKHF2 antibody detected the PLEKHF2 protein (arrow).

Please note: All products are 'FOR RESEARCH USE ONLY. NOT FOR USE IN DIAGNOSTIC OR THERAPEUTIC PROCEDURES'.