

TAS2R7 Antibody (C-term)

Affinity Purified Rabbit Polyclonal Antibody (Pab)

Catalog # AP16822b

Product Information

Application	WB, E
Primary Accession	Q9NYW3
Other Accession	NP_076408.1
Reactivity	Human
Host	Rabbit
Clonality	Polyclonal
Isotype	Rabbit IgG
Clone Names	RB36535
Calculated MW	36550
Antigen Region	208-235

Additional Information

Gene ID	50837
Other Names	Taste receptor type 2 member 7, T2R7, Taste receptor family B member 4, TRB4, TAS2R7
Target/Specificity	This TAS2R7 antibody is generated from rabbits immunized with a KLH conjugated synthetic peptide between 208-235 amino acids from the C-terminal region of human TAS2R7.
Dilution	WB~~1:1000 E~~Use at an assay dependent concentration.
Format	Purified polyclonal antibody supplied in PBS with 0.09% (W/V) sodium azide. This antibody is purified through a protein A column, followed by peptide affinity purification.
Storage	Maintain refrigerated at 2-8°C for up to 2 weeks. For long term storage store at -20°C in small aliquots to prevent freeze-thaw cycles.
Precautions	TAS2R7 Antibody (C-term) is for research use only and not for use in diagnostic or therapeutic procedures.

Protein Information

Name	TAS2R7
Function	Gustducin-coupled receptor implicated in the perception of bitter compounds in the oral cavity and the gastrointestinal tract. Signals through PLCB2 and the calcium-regulated cation channel TRPM5.

Cellular Location	Membrane; Multi-pass membrane protein.
Tissue Location	Expressed in subsets of taste receptor cells of the tongue and palate epithelium and exclusively in gustducin-positive cells

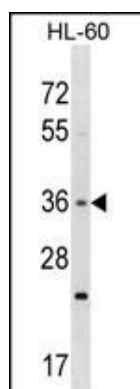
Background

This gene product belongs to the family of candidate taste receptors that are members of the G-protein-coupled receptor superfamily. These proteins are specifically expressed in the taste receptor cells of the tongue and palate epithelia. They are organized in the genome in clusters and are genetically linked to loci that influence bitter perception in mice and humans. In functional expression studies, they respond to bitter tastants. This gene maps to the taste receptor gene cluster on chromosome 12p13.

References

Go, Y., et al. Genetics 170(1):313-326(2005)
Fischer, A., et al. Mol. Biol. Evol. 22(3):432-436(2005)
Zhang, Y., et al. Cell 112(3):293-301(2003)
Montmayeur, J.P., et al. Curr. Opin. Neurobiol. 12(4):366-371(2002)
Margolskee, R.F. J. Biol. Chem. 277(1):1-4(2002)

Images



TAS2R7 Antibody (C-term) (Cat. #AP16822b) western blot analysis in HL-60 cell line lysates (35ug/lane). This demonstrates the TAS2R7 antibody detected the TAS2R7 protein (arrow).

Please note: All products are 'FOR RESEARCH USE ONLY. NOT FOR USE IN DIAGNOSTIC OR THERAPEUTIC PROCEDURES'.