

PHEX Antibody (C-term)

Affinity Purified Rabbit Polyclonal Antibody (Pab)

Catalog # AP16834b

Product Information

Application	WB, E
Primary Accession	P78562
Other Accession	P70669 , NP_000435.3
Reactivity	Human, Rat, Mouse
Predicted	Mouse
Host	Rabbit
Clonality	Polyclonal
Isotype	Rabbit IgG
Clone Names	RB36572
Calculated MW	86474
Antigen Region	567-595

Additional Information

Gene ID	5251
Other Names	Phosphate-regulating neutral endopeptidase, 3424-, Metalloendopeptidase homolog PEX, Vitamin D-resistant hypophosphatemic rickets protein, X-linked hypophosphatemia protein, HYP, PHEX, PEX
Target/Specificity	This PHEX antibody is generated from rabbits immunized with a KLH conjugated synthetic peptide between 567-595 amino acids from the C-terminal region of human PHEX.
Dilution	WB~~1:1000 E~~Use at an assay dependent concentration.
Format	Purified polyclonal antibody supplied in PBS with 0.05% (V/V) Proclin 300. This antibody is prepared by Saturated Ammonium Sulfate (SAS) precipitation followed by dialysis against PBS.
Storage	Maintain refrigerated at 2-8°C for up to 2 weeks. For long term storage store at -20°C in small aliquots to prevent freeze-thaw cycles.
Precautions	PHEX Antibody (C-term) is for research use only and not for use in diagnostic or therapeutic procedures.

Protein Information

Name	PHEX
Synonyms	PEX

Function	Peptidase that cleaves SIBLING (small integrin-binding ligand, N-linked glycoprotein)-derived ASARM peptides, thus regulating their biological activity (PubMed: 15664000 , PubMed: 18162525 , PubMed: 18597632 , PubMed: 9593714). Cleaves ASARM peptides between Ser and Glu or Asp residues (PubMed: 18597632). Regulates osteogenic cell differentiation and bone mineralization through the cleavage of the MEPE-derived ASARM peptide (PubMed: 18597632). Promotes dentin mineralization and renal phosphate reabsorption by cleaving DMP1- and MEPE-derived ASARM peptides (PubMed: 18162525 , PubMed: 18597632). Inhibits the cleavage of MEPE by CTSB/cathepsin B thus preventing MEPE degradation (PubMed: 12220505).
Cellular Location	Cell membrane; Single-pass type II membrane protein
Tissue Location	Specifically expressed in ovary (PubMed:9070861). Expressed at low levels in kidney (PubMed:9070861)

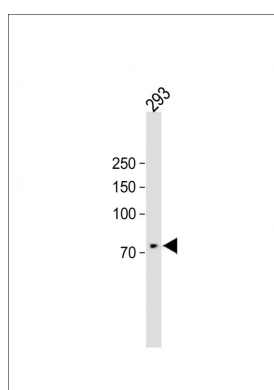
Background

The protein encoded by this gene is a transmembrane endopeptidase that belongs to the type II integral membrane zinc-dependent endopeptidase family. The protein is thought to be involved in bone and dentin mineralization and renal phosphate reabsorption. Mutations in this gene cause X-linked hypophosphatemic rickets.

References

Majewski, P.M., et al. J. Biol. Chem. 285(45):34828-34838(2010)
Yokoyama, K., et al. Nephron Clin Pract 115 (4), C237-C243 (2010) :
Clausmeyer, S., et al. Calcif. Tissue Int. 85(3):211-220(2009)
Gaucher, C., et al. Hum. Genet. 125(4):401-411(2009)
Strom, T.M., et al. Curr. Opin. Nephrol. Hypertens. 17(4):357-362(2008)

Images



All lanes : Anti-PHEX Antibody (C-term) 1:500 dilution
Lane 1 : 293 whole cell lysate Lysates/proteins at 20 µg per lane. Secondary Goat Anti-Rabbit IgG, (H+L), Peroxidase conjugated (ASP1615) at 1/15000 dilution. Observed band size : 72kDa Blocking/Dilution buffer : 5% NFDM/TBST.

Please note: All products are 'FOR RESEARCH USE ONLY. NOT FOR USE IN DIAGNOSTIC OR THERAPEUTIC PROCEDURES'.