

SEPT11 Antibody (Center)

Affinity Purified Rabbit Polyclonal Antibody (Pab)

Catalog # AP16837c

Product Information

Application	WB, E
Primary Accession	Q9NVA2
Other Accession	B3GNI6 , Q8C1B7 , Q4R555 , A2VE99 , NP_060713.1
Reactivity	Human
Predicted	Bovine, Monkey, Mouse, Rat
Host	Rabbit
Clonality	Polyclonal
Isotype	Rabbit IgG
Clone Names	RB36576
Calculated MW	49398
Antigen Region	353-382

Additional Information

Gene ID	55752
Other Names	Septin-11, SEPT11
Target/Specificity	This SEPT11 antibody is generated from rabbits immunized with a KLH conjugated synthetic peptide between 353-382 amino acids from the Central region of human SEPT11.
Dilution	WB~~1:1000 E~~Use at an assay dependent concentration.
Format	Purified polyclonal antibody supplied in PBS with 0.09% (W/V) sodium azide. This antibody is purified through a protein A column, followed by peptide affinity purification.
Storage	Maintain refrigerated at 2-8°C for up to 2 weeks. For long term storage store at -20°C in small aliquots to prevent freeze-thaw cycles.
Precautions	SEPT11 Antibody (Center) is for research use only and not for use in diagnostic or therapeutic procedures.

Protein Information

Name	SEPTIN11 (HGNC:25589)
Synonyms	SEPT11
Function	Filament-forming cytoskeletal GTPase. May play a role in cytokinesis

(Potential). May play a role in the cytoarchitecture of neurons, including dendritic arborization and dendritic spines, and in GABAergic synaptic connectivity (By similarity). During *Listeria monocytogenes* infection, not required for the bacterial entry process, but restricts its efficacy.

Cellular Location

Cytoplasm, cytoskeleton. Synapse. Cell projection, dendritic spine. Cell projection, axon Note=Partly colocalizes with stress fibers and microtubules. During bacterial infection, displays a collar shape structure next to actin at the pole of invading bacteria

Tissue Location

Widely expressed, except in leukocytes.

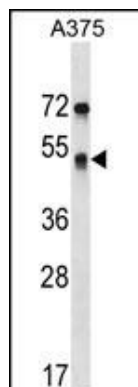
Background

SEPT11 belongs to the conserved septin family of filament-forming cytoskeletal GTPases that are involved in a variety of cellular functions including cytokinesis and vesicle trafficking (Hanai et al., 2004 [PubMed 15196925]; Nagata et al., 2004 [PubMed 15485874]).

References

Rose, J.E., et al. Mol. Med. 16 (7-8), 247-253 (2010) :
Huang, G.L., et al. World J. Gastroenterol. 16(16):2046-2054(2010)
Mostowy, S., et al. J. Biol. Chem. 284(17):11613-11621(2009)
Ding, X., et al. Mol. Cells 25(3):385-389(2008)
Xin, X., et al. J. Histochem. Cytochem. 55(11):1089-1094(2007)

Images



SEPT11 Antibody (Center) (Cat. #AP16837c) western blot analysis in A375 cell line lysates (35ug/lane). This demonstrates the SEPT11 antibody detected the SEPT11 protein (arrow).

Citations

- [A Septin Cytoskeleton-Targeting Small Molecule, Forchlorfenuron, Inhibits Epithelial Migration via Septin-Independent Perturbation of Cellular Signaling](#)

Please note: All products are 'FOR RESEARCH USE ONLY. NOT FOR USE IN DIAGNOSTIC OR THERAPEUTIC PROCEDURES'.