

ESYT1 Antibody (C-term)

Affinity Purified Rabbit Polyclonal Antibody (Pab)

Catalog # AP16840b

Product Information

Application	WB, E
Primary Accession	Q9BSJ8
Other Accession	NP_056107.1 , NP_001171725.1
Reactivity	Human
Host	Rabbit
Clonality	Polyclonal
Isotype	Rabbit IgG
Clone Names	RB36590
Calculated MW	122856
Antigen Region	1002-1031

Additional Information

Gene ID	23344
Other Names	Extended synaptotagmin-1, E-Syt1, Membrane-bound C2 domain-containing protein, ESYT1, FAM62A, KIAA0747, MBC2
Target/Specificity	This ESYT1 antibody is generated from rabbits immunized with a KLH conjugated synthetic peptide between 1002-1031 amino acids from the C-terminal region of human ESYT1.
Dilution	WB~~1:1000 E~~Use at an assay dependent concentration.
Format	Purified polyclonal antibody supplied in PBS with 0.09% (W/V) sodium azide. This antibody is purified through a protein A column, followed by peptide affinity purification.
Storage	Maintain refrigerated at 2-8°C for up to 2 weeks. For long term storage store at -20°C in small aliquots to prevent freeze-thaw cycles.
Precautions	ESYT1 Antibody (C-term) is for research use only and not for use in diagnostic or therapeutic procedures.

Protein Information

Name	ESYT1 (HGNC:29534)
Synonyms	FAM62A, KIAA0747, MBC2
Function	Binds calcium (via the C2 domains) and translocates to sites of contact

between the endoplasmic reticulum and the cell membrane in response to increased cytosolic calcium levels (PubMed:[23791178](#), PubMed:[24183667](#)). Helps tether the endoplasmic reticulum to the cell membrane and promotes the formation of appositions between the endoplasmic reticulum and the cell membrane (PubMed:[24183667](#)). Acts as an inhibitor of ADGRD1 G-protein-coupled receptor activity in absence of cytosolic calcium (PubMed:[38758649](#)). Binds glycerophospholipids in a barrel-like domain and may play a role in cellular lipid transport (By similarity).

Cellular Location

Endoplasmic reticulum membrane; Multi-pass membrane protein. Cell membrane; Peripheral membrane protein. Note=Localizes primarily to the endoplasmic reticulum (PubMed:29469807). Recruited to sites of contact between the endoplasmic reticulum and the cell membrane in response to increased cytosolic calcium levels (PubMed:22250200, PubMed:29469807).

Tissue Location

Widely expressed..

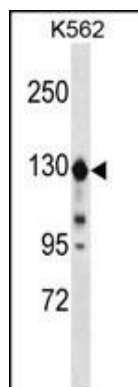
Background

ESYT1 may play a role as calcium-regulated intrinsic membrane protein (By similarity).

References

Craxton, M. BMC Genomics 8, 259 (2007) :
Laveder, P., et al. Nucleic Acids Res. 30 (9), E38 (2002) :
Morris, N.J., et al. Biochim. Biophys. Acta 1431(2):525-530(1999)

Images



ESYT1 Antibody (C-term) (Cat. #AP16840b) western blot analysis in K562 cell line lysates (35ug/lane). This demonstrates the ESYT1 antibody detected the ESYT1 protein (arrow).

Please note: All products are 'FOR RESEARCH USE ONLY. NOT FOR USE IN DIAGNOSTIC OR THERAPEUTIC PROCEDURES'.