

SEPT1 Antibody (N-term)

Affinity Purified Rabbit Polyclonal Antibody (Pab)

Catalog # AP16865a

Product Information

Application	WB, E
Primary Accession	Q8WYJ6
Other Accession	NP_443070.1
Reactivity	Human
Host	Rabbit
Clonality	Polyclonal
Isotype	Rabbit IgG
Clone Names	RB36855
Calculated MW	42386
Antigen Region	54-82

Additional Information

Gene ID	1731
Other Names	Septin-1, LARP, Peanut-like protein 3, Serologically defined breast cancer antigen NY-BR-24, SEPT1, DIFF6, PNUTL3
Target/Specificity	This SEPT1 antibody is generated from rabbits immunized with a KLH conjugated synthetic peptide between 54-82 amino acids from the N-terminal region of human SEPT1.
Dilution	WB~~1:1000 E~~Use at an assay dependent concentration.
Format	Purified polyclonal antibody supplied in PBS with 0.09% (W/V) sodium azide. This antibody is purified through a protein A column, followed by peptide affinity purification.
Storage	Maintain refrigerated at 2-8°C for up to 2 weeks. For long term storage store at -20°C in small aliquots to prevent freeze-thaw cycles.
Precautions	SEPT1 Antibody (N-term) is for research use only and not for use in diagnostic or therapeutic procedures.

Protein Information

Name	SEPTIN1 (HGNC:2879)
Synonyms	DIFF6, PNUTL3, SEPT1
Function	Filament-forming cytoskeletal GTPase (By similarity). May play a role in

cytokinesis (Potential).

Cellular Location

Cytoplasm. Cytoplasm, cytoskeleton. Cytoplasm, cytoskeleton, microtubule organizing center, centrosome. Midbody. Note=Remains at the centrosomes and the nearby microtubules throughout mitosis. Localizes to the midbody during cytokinesis

Tissue Location

Expressed at high levels in lymphoid and hematopoietic tissues.

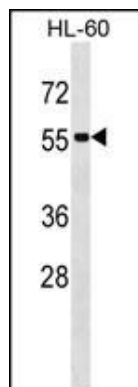
Background

This gene is a member of the septin family of GTPases. Members of this family are required for cytokinesis. This gene encodes a protein associated with the tau-based paired helical filament core, and may contribute to the formation of neurofibrillary tangles in Alzheimer's disease. [provided by RefSeq].

References

Kato, Y., et al. Int. J. Oncol. 31(5):1021-1028(2007)
Steels, J.D., et al. Cell Motil. Cytoskeleton 64(10):794-807(2007)
Qi, M., et al. Biochem. Biophys. Res. Commun. 336(3):994-1000(2005)
Qi, M., et al. Biochem. Biophys. Res. Commun. 336(3):994-1000(2005)
Scanlan, M.J., et al. Cancer Immun. 1, 4 (2001) :

Images



SEPT1 Antibody (N-term) (Cat. #AP16865a) western blot analysis in HL-60 cell line lysates (35ug/lane). This demonstrates the SEPT1 antibody detected the SEPT1 protein (arrow).

Please note: All products are 'FOR RESEARCH USE ONLY. NOT FOR USE IN DIAGNOSTIC OR THERAPEUTIC PROCEDURES'.