

LMBRD2 Antibody (C-term)

Affinity Purified Rabbit Polyclonal Antibody (Pab)

Catalog # AP16913b

Product Information

Application	WB, E
Primary Accession	Q68DH5
Other Accession	Q8C561 , NP_001007528.1
Reactivity	Human, Mouse
Host	Rabbit
Clonality	Polyclonal
Isotype	Rabbit IgG
Clone Names	RB35916
Calculated MW	81172
Antigen Region	623-651

Additional Information

Gene ID	92255
Other Names	LMBR1 domain-containing protein 2, LMBRD2
Target/Specificity	This LMBRD2 antibody is generated from rabbits immunized with a KLH conjugated synthetic peptide between 623-651 amino acids from the C-terminal region of human LMBRD2.
Dilution	WB~~1:2000 E~~Use at an assay dependent concentration.
Format	Purified polyclonal antibody supplied in PBS with 0.09% (W/V) sodium azide. This antibody is purified through a protein A column, followed by peptide affinity purification.
Storage	Maintain refrigerated at 2-8°C for up to 2 weeks. For long term storage store at -20°C in small aliquots to prevent freeze-thaw cycles.
Precautions	LMBRD2 Antibody (C-term) is for research use only and not for use in diagnostic or therapeutic procedures.

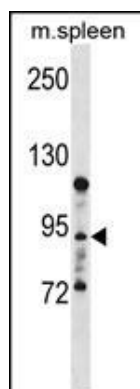
Protein Information

Name	LMBRD2 (HGNC:25287)
Function	Recruited to ligand-activated beta-2 adrenergic receptor/ADRB2, it negatively regulates the adrenergic receptor signaling pathway (PubMed: 28388415). May also regulate other G-protein coupled receptors including type-1 angiotensin II receptor/AGTR1 (Probable).

References

Yang, J.J., et al. JAMA 301(4):393-403(2009)

Images



LMBRD2 Antibody (C-term) (Cat. #AP16913b) western blot analysis in mouse spleen tissue lysates (35ug/lane). This demonstrates the LMBRD2 antibody detected the LMBRD2 protein (arrow).

Please note: All products are 'FOR RESEARCH USE ONLY. NOT FOR USE IN DIAGNOSTIC OR THERAPEUTIC PROCEDURES'.