

GPR149 Antibody (Center)

Affinity Purified Rabbit Polyclonal Antibody (Pab)

Catalog # AP16917c

Product Information

Application	WB, E
Primary Accession	Q86SP6
Other Accession	NP_001033794.1
Reactivity	Human
Host	Rabbit
Clonality	Polyclonal
Isotype	Rabbit IgG
Clone Names	RB36178
Calculated MW	80984
Antigen Region	421-449

Additional Information

Gene ID	344758
Other Names	Probable G-protein coupled receptor 149, G-protein coupled receptor PGR10, GPR149, PGR10
Target/Specificity	This GPR149 antibody is generated from rabbits immunized with a KLH conjugated synthetic peptide between 421-449 amino acids from the Central region of human GPR149.
Dilution	WB~~1:1000 E~~Use at an assay dependent concentration.
Format	Purified polyclonal antibody supplied in PBS with 0.09% (W/V) sodium azide. This antibody is purified through a protein A column, followed by peptide affinity purification.
Storage	Maintain refrigerated at 2-8°C for up to 2 weeks. For long term storage store at -20°C in small aliquots to prevent freeze-thaw cycles.
Precautions	GPR149 Antibody (Center) is for research use only and not for use in diagnostic or therapeutic procedures.

Protein Information

Name	GPR149
Synonyms	PGR10
Function	Orphan receptor.

Cellular Location

Cell membrane; Multi-pass membrane protein.

Background

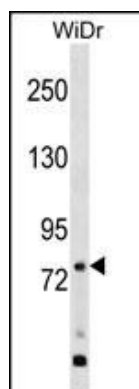
GPR149 is an orphan receptor.

References

Rose, J.E., et al. Mol. Med. 16 (7-8), 247-253 (2010) :

Vassilatis, D.K., et al. Proc. Natl. Acad. Sci. U.S.A. 100(8):4903-4908(2003)

Images



GPR149 Antibody (Center) (Cat. #AP16917c) western blot analysis in WiDr cell line lysates (35ug/lane). This demonstrates the GPR149 antibody detected the GPR149 protein (arrow).

Please note: All products are 'FOR RESEARCH USE ONLY. NOT FOR USE IN DIAGNOSTIC OR THERAPEUTIC PROCEDURES'.