

# DBNL Antibody (C-term)

Affinity Purified Rabbit Polyclonal Antibody (Pab)

Catalog # AP16932b

## Product Information

---

Application	WB, E
Primary Accession	<a href="#">Q9UJU6</a>
Other Accession	<a href="#">NP_001014436.1</a> , <a href="#">NP_001116428.1</a>
Reactivity	Human
Host	Rabbit
Clonality	Polyclonal
Isotype	Rabbit IgG
Clone Names	RB36303
Calculated MW	48207
Antigen Region	292-319

## Additional Information

---

Gene ID	28988
Other Names	Drebrin-like protein, Cervical SH3P7, Cervical mucin-associated protein, Drebrin-F, HPK1-interacting protein of 55 kDa, HIP-55, SH3 domain-containing protein 7, DBNL, CMAP, SH3P7
Target/Specificity	This DBNL antibody is generated from rabbits immunized with a KLH conjugated synthetic peptide between 292-319 amino acids from the C-terminal region of human DBNL.
Dilution	WB~~1:1000 E~~Use at an assay dependent concentration.
Format	Purified polyclonal antibody supplied in PBS with 0.09% (W/V) sodium azide. This antibody is purified through a protein A column, followed by peptide affinity purification.
Storage	Maintain refrigerated at 2-8°C for up to 2 weeks. For long term storage store at -20°C in small aliquots to prevent freeze-thaw cycles.
Precautions	DBNL Antibody (C-term) is for research use only and not for use in diagnostic or therapeutic procedures.

## Protein Information

---

Name	DBNL
Synonyms	CMAP, SH3P7

**Function** Adapter protein that binds F-actin and DNM1, and thereby plays a role in receptor-mediated endocytosis. Plays a role in the reorganization of the actin cytoskeleton, formation of cell projections, such as neurites, in neuron morphogenesis and synapse formation via its interaction with WASL and COBL. Does not bind G-actin and promote actin polymerization by itself. Required for the formation of organized podosome rosettes (By similarity). May act as a common effector of antigen receptor-signaling pathways in leukocytes. Acts as a key component of the immunological synapse that regulates T-cell activation by bridging TCRs and the actin cytoskeleton to gene activation and endocytic processes.

**Cellular Location** Cytoplasm, cytoskeleton {ECO:0000250|UniProtKB:Q62418}. Cell projection, lamellipodium {ECO:0000250|UniProtKB:Q62418}. Cell projection, ruffle {ECO:0000250|UniProtKB:Q62418}. Cytoplasm, cell cortex {ECO:0000250|UniProtKB:Q62418}. Cytoplasm, cytosol {ECO:0000250|UniProtKB:Q9JHL4}. Synapse {ECO:0000250|UniProtKB:Q62418} Perikaryon {ECO:0000250|UniProtKB:Q62418}. Cell projection, neuron projection {ECO:0000250|UniProtKB:Q62418}. Cell membrane; Peripheral membrane protein {ECO:0000250|UniProtKB:Q62418}; Cytoplasmic side {ECO:0000250|UniProtKB:Q62418}. Cytoplasmic vesicle, clathrin-coated vesicle membrane {ECO:0000250|UniProtKB:Q62418}; Peripheral membrane protein {ECO:0000250|UniProtKB:Q62418}; Cytoplasmic side {ECO:0000250|UniProtKB:Q62418}. Golgi apparatus membrane {ECO:0000250|UniProtKB:Q62418}; Peripheral membrane protein {ECO:0000250|UniProtKB:Q62418}; Cytoplasmic side {ECO:0000250|UniProtKB:Q62418}. Cell projection, podosome {ECO:0000250|UniProtKB:Q62418}. Early endosome. Cell projection, dendrite {ECO:0000250|UniProtKB:Q9JHL4}. Postsynaptic density {ECO:0000250|UniProtKB:Q9JHL4}. Note=Associates with lamellipodial actin and membrane ruffles. Colocalizes with actin and cortactin at podosome dots and podosome rosettes. {ECO:0000250|UniProtKB:Q62418, ECO:0000250|UniProtKB:Q9JHL4}

## Background

---

Actin-binding adapter protein. May act as a common effector of antigen receptor-signaling pathways in leukocytes. Its association with dynamin suggests that it may also connect the actin cytoskeleton to endocytic function. Acts as a key component of the immunological synapse that regulates T-cell activation by bridging TCRs and the actin cytoskeleton to gene activation and endocytic processes. Binds to F-actin but is not involved in actin polymerization, capping or bundling. Does not bind G-actin.

## References

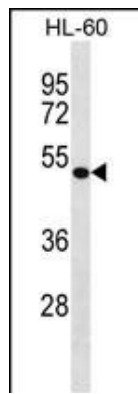
---

Venkatesan, K., et al. Nat. Methods 6(1):83-90(2009)  
Haeckel, A., et al. J. Neurosci. 28(40):10031-10044(2008)  
Le Bras, S., et al. FEBS Lett. 581(5):967-974(2007)  
Lamesch, P., et al. Genomics 89(3):307-315(2007)  
Ewing, R.M., et al. Mol. Syst. Biol. 3, 89 (2007) :

## Images

---

DBNL Antibody (C-term) (Cat. #AP16932b) western blot analysis in HL-60 cell line lysates (35ug/lane). This demonstrates the DBNL antibody detected the DBNL protein (arrow).



Please note: All products are 'FOR RESEARCH USE ONLY. NOT FOR USE IN DIAGNOSTIC OR THERAPEUTIC PROCEDURES'.