

PPM1M Antibody (Center)

Affinity Purified Rabbit Polyclonal Antibody (Pab)

Catalog # AP16936c

Product Information

Application	WB, E
Primary Accession	Q96MI6
Other Accession	Q8BU27 , NP_001116342.1 , NP_653242.2
Reactivity	Human
Predicted	Mouse
Host	Rabbit
Clonality	Polyclonal
Isotype	Rabbit IgG
Clone Names	RB36407
Calculated MW	51136
Antigen Region	130-158

Additional Information

Gene ID	132160
Other Names	Protein phosphatase 1M, Protein phosphatase 2C isoform eta, PP2C-eta, PP2CE, PPM1M, PPM1E
Target/Specificity	This PPM1M antibody is generated from rabbits immunized with a KLH conjugated synthetic peptide between 130-158 amino acids from the Central region of human PPM1M.
Dilution	WB~~1:1000 E~~Use at an assay dependent concentration.
Format	Purified polyclonal antibody supplied in PBS with 0.09% (W/V) sodium azide. This antibody is purified through a protein A column, followed by peptide affinity purification.
Storage	Maintain refrigerated at 2-8°C for up to 2 weeks. For long term storage store at -20°C in small aliquots to prevent freeze-thaw cycles.
Precautions	PPM1M Antibody (Center) is for research use only and not for use in diagnostic or therapeutic procedures.

Protein Information

Name	PPM1M
Synonyms	PPM1E

Background

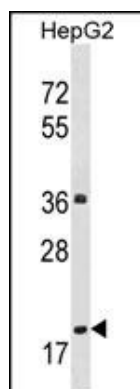
PPM1M belongs to the PP2C family.

References

Henmi, T., et al. Biochem. J. 423(1):71-78(2009)

Komaki, K., et al. Biochim. Biophys. Acta 1630 (2-3), 130-137 (2003) :

Images



PPM1M Antibody (Center) (Cat. #AP16936c) western blot analysis in HepG2 cell line lysates (35ug/lane). This demonstrates the PPM1M antibody detected the PPM1M protein (arrow).

Please note: All products are 'FOR RESEARCH USE ONLY. NOT FOR USE IN DIAGNOSTIC OR THERAPEUTIC PROCEDURES'.