

GCSH Antibody (N-term)

Affinity Purified Rabbit Polyclonal Antibody (Pab)

Catalog # AP16949a

Product Information

Application	WB, E
Primary Accession	P23434
Other Accession	Q9N121 , P20821
Reactivity	Human
Predicted	Bovine, Rabbit
Host	Rabbit
Clonality	Polyclonal
Isotype	Rabbit IgG
Clone Names	RB36545
Calculated MW	18885
Antigen Region	27-56

Additional Information

Gene ID	2653
Other Names	Glycine cleavage system H protein, mitochondrial, Lipoic acid-containing protein, GCSH
Target/Specificity	This GCSH antibody is generated from rabbits immunized with a KLH conjugated synthetic peptide between 27-56 amino acids from the N-terminal region of human GCSH.
Dilution	WB~~1:1000 E~~Use at an assay dependent concentration.
Format	Purified polyclonal antibody supplied in PBS with 0.09% (W/V) sodium azide. This antibody is purified through a protein A column, followed by peptide affinity purification.
Storage	Maintain refrigerated at 2-8°C for up to 2 weeks. For long term storage store at -20°C in small aliquots to prevent freeze-thaw cycles.
Precautions	GCSH Antibody (N-term) is for research use only and not for use in diagnostic or therapeutic procedures.

Protein Information

Name	GCSH (HGNC:4208)
Function	The glycine cleavage system catalyzes the degradation of glycine. The H protein (GCSH) shuttles the methylamine group of glycine from the P protein

(GLDC) to the T protein (GCST). Has a pivotal role in the lipoylation of enzymes involved in cellular energetics such as the mitochondrial dihydrolipoyllysine-residue acetyltransferase component of pyruvate dehydrogenase complex (DLAT), and the mitochondrial dihydrolipoyllysine-residue succinyltransferase component of 2-oxoglutarate dehydrogenase complex (DLST) (PubMed:[36190515](#)).

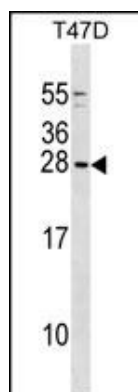
Cellular Location

Mitochondrion.

Background

The glycine cleavage system catalyzes the degradation of glycine. The H protein shuttles the methylamine group of glycine from the P protein to the T protein.

Images



GCSH Antibody (N-term) (Cat. #AP16949a) western blot analysis in T47D cell line lysates (35ug/lane). This demonstrates the GCSH antibody detected the GCSH protein (arrow).

Please note: All products are 'FOR RESEARCH USE ONLY. NOT FOR USE IN DIAGNOSTIC OR THERAPEUTIC PROCEDURES'.