

# YIPF3 Antibody (C-term)

Affinity Purified Rabbit Polyclonal Antibody (Pab)

Catalog # AP16954b

## Product Information

---

Application	WB, E
Primary Accession	<a href="#">Q9GZM5</a>
Other Accession	<a href="#">NP_056203.2</a>
Reactivity	Human, Mouse
Host	Rabbit
Clonality	Polyclonal
Isotype	Rabbit IgG
Clone Names	RB36585
Calculated MW	38248
Antigen Region	292-321

## Additional Information

---

Gene ID	25844
Other Names	Protein YIPF3, Killer lineage protein 1, Natural killer cell-specific antigen KLIP1, YIP1 family member 3, Protein YIPF3, 36 kDa form III, YIPF3, C6orf109, KLIP1
Target/Specificity	This YIPF3 antibody is generated from rabbits immunized with a KLH conjugated synthetic peptide between 292-321 amino acids from the C-terminal region of human YIPF3.
Dilution	WB~~1:1000 E~~Use at an assay dependent concentration.
Format	Purified polyclonal antibody supplied in PBS with 0.09% (W/V) sodium azide. This antibody is purified through a protein A column, followed by peptide affinity purification.
Storage	Maintain refrigerated at 2-8°C for up to 2 weeks. For long term storage store at -20°C in small aliquots to prevent freeze-thaw cycles.
Precautions	YIPF3 Antibody (C-term) is for research use only and not for use in diagnostic or therapeutic procedures.

## Protein Information

---

Name	YIPF3
Synonyms	C6orf109, KLIP1
Function	Involved in the maintenance of the Golgi structure. May play a role in

hematopoiesis.

**Cellular Location**

Cell membrane; Multi-pass membrane protein. Cytoplasm. Golgi apparatus, cis-Golgi network membrane; Multi-pass membrane protein  
Note=Localization to the cytoplasm or to the cell membrane is developmentally and ontogenetically regulated

**Tissue Location**

Expressed by nucleated hematopoietic cells (at protein level).

## Background

---

YIPF3 may play a role in hematopoiesis.

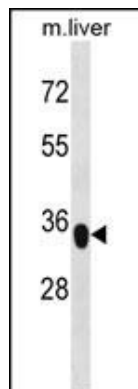
## References

---

Strausberg, R.L., et al. Proc. Natl. Acad. Sci. U.S.A. 99(26):16899-16903(2002)

## Images

---



YIPF3 Antibody (C-term) (Cat. #AP16954b) western blot analysis in mouse liver tissue lysates (35ug/lane). This demonstrates the YIPF3 antibody detected the YIPF3 protein (arrow).

Please note: All products are 'FOR RESEARCH USE ONLY. NOT FOR USE IN DIAGNOSTIC OR THERAPEUTIC PROCEDURES'.