

# MS4A1 Antibody (C-term)

Affinity Purified Rabbit Polyclonal Antibody (Pab)

Catalog # AP16973b

## Product Information

---

<b>Application</b>	WB, E
<b>Primary Accession</b>	<a href="#">P11836</a>
<b>Other Accession</b>	<a href="#">NP_068769.2</a> , <a href="#">NP_690605.1</a>
<b>Reactivity</b>	Human
<b>Host</b>	Rabbit
<b>Clonality</b>	Polyclonal
<b>Isotype</b>	Rabbit IgG
<b>Clone Names</b>	RB36650
<b>Calculated MW</b>	33077
<b>Antigen Region</b>	216-244

## Additional Information

---

<b>Gene ID</b>	931
<b>Other Names</b>	B-lymphocyte antigen CD20, B-lymphocyte surface antigen B1, Bp35, Leukocyte surface antigen Leu-16, Membrane-spanning 4-domains subfamily A member 1, CD20, MS4A1, CD20
<b>Target/Specificity</b>	This MS4A1 antibody is generated from rabbits immunized with a KLH conjugated synthetic peptide between 216-244 amino acids from the C-terminal region of human MS4A1.
<b>Dilution</b>	WB~~1:1000 E~~Use at an assay dependent concentration.
<b>Format</b>	Purified polyclonal antibody supplied in PBS with 0.09% (W/V) sodium azide. This antibody is purified through a protein A column, followed by peptide affinity purification.
<b>Storage</b>	Maintain refrigerated at 2-8°C for up to 2 weeks. For long term storage store at -20°C in small aliquots to prevent freeze-thaw cycles.
<b>Precautions</b>	MS4A1 Antibody (C-term) is for research use only and not for use in diagnostic or therapeutic procedures.

## Protein Information

---

<b>Name</b>	MS4A1
<b>Synonyms</b>	CD20

<b>Function</b>	B-lymphocyte-specific membrane protein that plays a role in the regulation of cellular calcium influx necessary for the development, differentiation, and activation of B-lymphocytes (PubMed: <a href="#">12920111</a> , PubMed: <a href="#">3925015</a> , PubMed: <a href="#">7684739</a> ). Functions as a store-operated calcium (SOC) channel component promoting calcium influx after activation by the B-cell receptor/BCR (PubMed: <a href="#">12920111</a> , PubMed: <a href="#">18474602</a> , PubMed: <a href="#">7684739</a> ).
<b>Cellular Location</b>	Cell membrane; Multi-pass membrane protein. Cell membrane; Lipid-anchor. Note=Constitutively associated with membrane rafts.
<b>Tissue Location</b>	Expressed on B-cells.

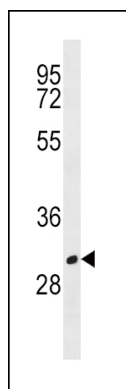
## Background

This gene encodes a member of the membrane-spanning 4A gene family. Members of this nascent protein family are characterized by common structural features and similar intron/exon splice boundaries and display unique expression patterns among hematopoietic cells and nonlymphoid tissues. This gene encodes a B-lymphocyte surface molecule which plays a role in the development and differentiation of B-cells into plasma cells. This family member is localized to 11q12, among a cluster of family members. Alternative splicing of this gene results in two transcript variants which encode the same protein.

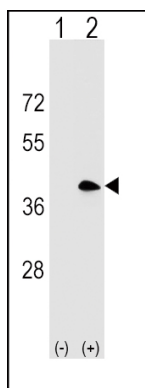
## References

Weber, M.S., et al. Ann. Neurol. 68(3):369-383(2010)  
Wu, D., et al. Am. J. Clin. Pathol. 134(2):258-265(2010)  
de Haij, S., et al. Cancer Res. 70(8):3209-3217(2010)  
Beers, S.A., et al. Semin. Hematol. 47(2):107-114(2010)  
Davila, S., et al. Genes Immun. 11(3):232-238(2010)

## Images



MS4A1 Antibody (C-term) (Cat. #AP16973b) western blot analysis in HL-60 cell line lysates (35ug/lane). This demonstrates the MS4A1 antibody detected the MS4A1 protein (arrow).



Western blot analysis of MS4A1 (arrow) using rabbit polyclonal MS4A1 Antibody (C-term) (Cat. #AP16973b). 293 cell lysates (2 ug/lane) either nontransfected (Lane 1) or transiently transfected (Lane 2) with the MS4A1 gene.

Please note: All products are 'FOR RESEARCH USE ONLY. NOT FOR USE IN DIAGNOSTIC OR THERAPEUTIC PROCEDURES'.