

PRAMEF14 Antibody (Center)

Affinity Purified Rabbit Polyclonal Antibody (Pab)

Catalog # AP16992c

Product Information

Application	WB, E
Primary Accession	Q5SWL7
Other Accession	Q95521 , Q5VWM6 , NP_001093324.1
Reactivity	Human
Host	Rabbit
Clonality	Polyclonal
Isotype	Rabbit IgG
Clone Names	RB36721
Calculated MW	55081
Antigen Region	213-241

Additional Information

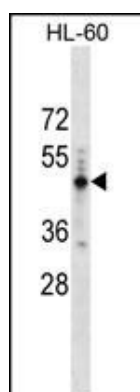
Gene ID	729528
Other Names	PRAME family member 14, PRAMEF14
Target/Specificity	This PRAMEF14 antibody is generated from rabbits immunized with a KLH conjugated synthetic peptide between 213-241 amino acids from the Central region of human PRAMEF14.
Dilution	WB~~1:1000 E~~Use at an assay dependent concentration.
Format	Purified polyclonal antibody supplied in PBS with 0.09% (W/V) sodium azide. This antibody is purified through a protein A column, followed by peptide affinity purification.
Storage	Maintain refrigerated at 2-8°C for up to 2 weeks. For long term storage store at -20°C in small aliquots to prevent freeze-thaw cycles.
Precautions	PRAMEF14 Antibody (Center) is for research use only and not for use in diagnostic or therapeutic procedures.

Protein Information

Name	PRAMEF14 (HGNC:13576)
------	---

References

Images



PRAMEF14 Antibody (Center) (Cat. #AP16992c) western blot analysis in HL-60 cell line lysates (35ug/lane). This demonstrates the PRAMEF14 antibody detected the PRAMEF14 protein (arrow).

Please note: All products are 'FOR RESEARCH USE ONLY. NOT FOR USE IN DIAGNOSTIC OR THERAPEUTIC PROCEDURES'.