

GPR171 Antibody (C-term)

Affinity Purified Rabbit Polyclonal Antibody (Pab)

Catalog # AP17026b

Product Information

Application	WB, E
Primary Accession	O14626
Other Accession	NP_037440.3
Reactivity	Human
Host	Rabbit
Clonality	Polyclonal
Isotype	Rabbit IgG
Clone Names	RB36802
Calculated MW	36754
Antigen Region	286-314

Additional Information

Gene ID	29909
Other Names	Probable G-protein coupled receptor 171, G-protein coupled receptor H963, GPR171, H963
Target/Specificity	This GPR171 antibody is generated from rabbits immunized with a KLH conjugated synthetic peptide between 286-314 amino acids from the C-terminal region of human GPR171.
Dilution	WB~~1:1000 E~~Use at an assay dependent concentration.
Format	Purified polyclonal antibody supplied in PBS with 0.09% (W/V) sodium azide. This antibody is purified through a protein A column, followed by peptide affinity purification.
Storage	Maintain refrigerated at 2-8°C for up to 2 weeks. For long term storage store at -20°C in small aliquots to prevent freeze-thaw cycles.
Precautions	GPR171 Antibody (C-term) is for research use only and not for use in diagnostic or therapeutic procedures.

Protein Information

Name	GPR171 (HGNC:30057)
Synonyms	H963
Function	G-protein coupled receptor for Big LEN, a 16-amino acid neuropeptide

produced from the precursor protein, proSAAS (encoded by PCSK1N). Acts through a G(i)-alpha-mediated pathway in response to Big LEN. Big LEN-GPR171 system plays an important role in regulating feeding and metabolism. Also plays a role in modulating fear and anxiety-like behaviors in the basolateral amygdala. Big LEN-GPR171 modulates the mu-type opioid receptor signaling and antinociception (By similarity). Acts as a negative regulator T cell function (PubMed:[34615877](#)).

Cellular Location

Cell membrane {ECO:0000250|UniProtKB:Q8BG55}; Multi-pass membrane protein. Note=Colocalized with GPR83 in the paraventricular nucleus. {ECO:0000250|UniProtKB:Q8BG55}

Tissue Location

Expressed in both T-cell subsets and natural killer cells, while it is undetectable in B cells or CD14(+) monocytes Expressed in peripheral blood mononuclear cells (PBMC) and Jurkat cells (at protein level).

Background

GPR171 is orphan receptor.

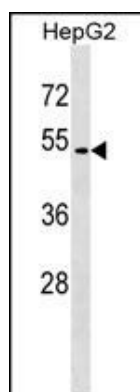
References

Joensuu, T., et al. Am. J. Hum. Genet. 69(4):673-684(2001)

Jacobs, K.A., et al. Gene 198 (1-2), 289-296 (1997) :

Adams, M.D., et al. Nature 377 (6547 SUPPL), 3-174 (1995) :

Images



GPR171 Antibody (C-term) (Cat. #AP17026b) western blot analysis in HepG2 cell line lysates (35ug/lane). This demonstrates the GPR171 antibody detected the GPR171 protein (arrow).

Please note: All products are 'FOR RESEARCH USE ONLY. NOT FOR USE IN DIAGNOSTIC OR THERAPEUTIC PROCEDURES'.