

CRTAP Antibody (N-term)

Affinity Purified Rabbit Polyclonal Antibody (Pab)

Catalog # AP17060a

Product Information

Application	WB, E
Primary Accession	O75718
Other Accession	NP_006362.1
Reactivity	Human, Mouse
Host	Rabbit
Clonality	Polyclonal
Isotype	Rabbit IgG
Clone Names	RB36912
Calculated MW	46562
Antigen Region	31-59

Additional Information

Gene ID	10491
Other Names	Cartilage-associated protein, CRTAP, CASP
Target/Specificity	This CRTAP antibody is generated from rabbits immunized with a KLH conjugated synthetic peptide between 31-59 amino acids from the N-terminal region of human CRTAP.
Dilution	WB~~1:1000 E~~Use at an assay dependent concentration.
Format	Purified polyclonal antibody supplied in PBS with 0.09% (W/V) sodium azide. This antibody is purified through a protein A column, followed by peptide affinity purification.
Storage	Maintain refrigerated at 2-8°C for up to 2 weeks. For long term storage store at -20°C in small aliquots to prevent freeze-thaw cycles.
Precautions	CRTAP Antibody (N-term) is for research use only and not for use in diagnostic or therapeutic procedures.

Protein Information

Name	CRTAP
Synonyms	CASP
Function	Necessary for efficient 3-hydroxylation of fibrillar collagen prolyl residues.

Cellular Location	Secreted, extracellular space, extracellular matrix
Tissue Location	Found in articular chondrocytes. Expressed in a variety of tissues

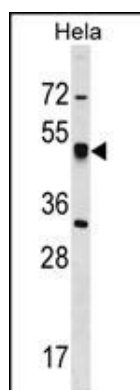
Background

The protein encoded by this gene is similar to the chicken and mouse CRTAP genes. The encoded protein is a scaffolding protein that may influence the activity of at least one member of the cytohesin/ARNO family in response to specific cellular stimuli. Defects in this gene are associated with osteogenesis imperfecta, a connective tissue disorder characterized by bone fragility and low bone mass.

References

Morello, R., et al. Curr Osteoporos Rep 8(2):77-83(2010)
 Li, G.H., et al. Osteoporos Int 21(6):1009-1020(2010)
 Fratzl-Zelman, N., et al. Bone 46(3):820-826(2010)
 Chang, W., et al. Hum. Mol. Genet. 19(2):223-234(2010)
 Marini, J.C., et al. Cell Tissue Res. 339(1):59-70(2010)

Images



CRTAP Antibody (N-term) (Cat. #AP17060a) western blot analysis in HeLa cell line lysates (35ug/lane). This demonstrates the CRTAP antibody detected the CRTAP protein (arrow).

Please note: All products are 'FOR RESEARCH USE ONLY. NOT FOR USE IN DIAGNOSTIC OR THERAPEUTIC PROCEDURES'.