

# CEP57 Antibody (N-term)

Affinity Purified Rabbit Polyclonal Antibody (Pab)

Catalog # AP17070a

## Product Information

---

<b>Application</b>	WB, E
<b>Primary Accession</b>	<a href="#">Q86XR8</a>
<b>Other Accession</b>	<a href="#">B4F7A7</a> , <a href="#">Q8CEE0</a> , <a href="#">NP_055494.2</a>
<b>Reactivity</b>	Human
<b>Predicted</b>	Mouse, Rat
<b>Host</b>	Rabbit
<b>Clonality</b>	Polyclonal
<b>Isotype</b>	Rabbit IgG
<b>Clone Names</b>	RB36933
<b>Calculated MW</b>	57089
<b>Antigen Region</b>	89-117

## Additional Information

---

<b>Gene ID</b>	9702
<b>Other Names</b>	Centrosomal protein of 57 kDa, Cep57, FGF2-interacting protein, Testis-specific protein 57, Translokin, CEP57, KIAA0092, TSP57
<b>Target/Specificity</b>	This CEP57 antibody is generated from rabbits immunized with a KLH conjugated synthetic peptide between 89-117 amino acids from the N-terminal region of human CEP57.
<b>Dilution</b>	WB~~1:1000 E~~Use at an assay dependent concentration.
<b>Format</b>	Purified polyclonal antibody supplied in PBS with 0.09% (W/V) sodium azide. This antibody is purified through a protein A column, followed by peptide affinity purification.
<b>Storage</b>	Maintain refrigerated at 2-8°C for up to 2 weeks. For long term storage store at -20°C in small aliquots to prevent freeze-thaw cycles.
<b>Precautions</b>	CEP57 Antibody (N-term) is for research use only and not for use in diagnostic or therapeutic procedures.

## Protein Information

---

<b>Name</b>	CEP57
<b>Synonyms</b>	KIAA0092, TSP57

<b>Function</b>	Centrosomal protein which may be required for microtubule attachment to centrosomes. May act by forming ring-like structures around microtubules. Mediates nuclear translocation and mitogenic activity of the internalized growth factor FGF2, but that of FGF1.
<b>Cellular Location</b>	Nucleus. Cytoplasm. Cytoplasm, cytoskeleton, microtubule organizing center, centrosome
<b>Tissue Location</b>	Ubiquitous..

## Background

---

Translokin binds basic fibroblast growth factor (FGF2; MIM 134920) and mediates its nuclear translocation and mitogenic activity (Bossard et al., 2003 [PubMed 12717444]).[supplied by OMIM].

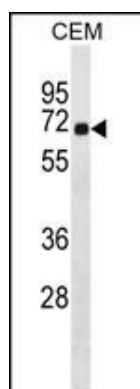
## References

---

Bailey, S.D., et al. Diabetes Care (2010) In press :  
Talmud, P.J., et al. Am. J. Hum. Genet. 85(5):628-642(2009)  
Petretti, C., et al. EMBO Rep. 7(4):418-424(2006)  
Kim, Y.S., et al. Biol. Reprod. 70(1):106-113(2004)  
Andersen, J.S., et al. Nature 426(6966):570-574(2003)

## Images

---



CEP57 Antibody (N-term) (Cat. #AP17070a) western blot analysis in CEM cell line lysates (35ug/lane). This demonstrates the CEP57 antibody detected the CEP57 protein (arrow).

Please note: All products are 'FOR RESEARCH USE ONLY. NOT FOR USE IN DIAGNOSTIC OR THERAPEUTIC PROCEDURES'.