

SH3GL1 Antibody (C-term)

Affinity Purified Rabbit Polyclonal Antibody (Pab)

Catalog # AP17084b

Product Information

Application	WB, E
Primary Accession	Q99961
Other Accession	NP_003016.1
Reactivity	Human
Host	Rabbit
Clonality	Polyclonal
Isotype	Rabbit IgG
Clone Names	RB37000
Calculated MW	41490
Antigen Region	242-270

Additional Information

Gene ID	6455
Other Names	Endophilin-A2, EEN fusion partner of MLL, Endophilin-2, Extra eleven-nineteen leukemia fusion gene protein, EEN, SH3 domain protein 2B, SH3 domain-containing GRB2-like protein 1, SH3GL1, CNSA1, SH3D2B
Target/Specificity	This SH3GL1 antibody is generated from rabbits immunized with a KLH conjugated synthetic peptide between 242-270 amino acids from the C-terminal region of human SH3GL1.
Dilution	WB~~1:1000 E~~Use at an assay dependent concentration.
Format	Purified polyclonal antibody supplied in PBS with 0.09% (W/V) sodium azide. This antibody is purified through a protein A column, followed by peptide affinity purification.
Storage	Maintain refrigerated at 2-8°C for up to 2 weeks. For long term storage store at -20°C in small aliquots to prevent freeze-thaw cycles.
Precautions	SH3GL1 Antibody (C-term) is for research use only and not for use in diagnostic or therapeutic procedures.

Protein Information

Name	SH3GL1
Synonyms	CNSA1, SH3D2B

Function	Implicated in endocytosis. May recruit other proteins to membranes with high curvature (By similarity).
Cellular Location	Cytoplasm. Early endosome membrane; Peripheral membrane protein. Cell projection, podosome. Note=Associated with postsynaptic endosomes in hippocampal neurons.
Tissue Location	Ubiquitous. Higher expression in pancreas, placenta, prostate, testis and uterus

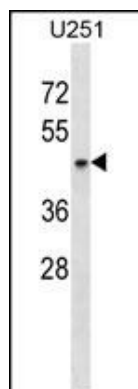
Background

SH3GL1 is implicated in endocytosis. May recruit other proteins to membranes with high curvature (By similarity).

References

Venkatesan, K., et al. Nat. Methods 6(1):83-90(2009)
 Sugiyama, N., et al. Mol. Cell Proteomics 6(6):1103-1109(2007)
 Ralser, M., et al. Hum. Mol. Genet. 14(19):2893-2909(2005)
 Stelzl, U., et al. Cell 122(6):957-968(2005)
 Lua, B.L., et al. J. Cell. Sci. 118 (PT 12), 2707-2721 (2005) :

Images



SH3GL1 Antibody (C-term) (Cat. #AP17084b) western blot analysis in U251 cell line lysates (35ug/lane). This demonstrates the SH3GL1 antibody detected the SH3GL1 protein (arrow).

Please note: All products are 'FOR RESEARCH USE ONLY. NOT FOR USE IN DIAGNOSTIC OR THERAPEUTIC PROCEDURES'.