

# MMRN1 Antibody (N-term)

Affinity Purified Rabbit Polyclonal Antibody (Pab)  
Catalog # AP17087a

## Product Information

---

<b>Application</b>	WB, E
<b>Primary Accession</b>	<a href="#">Q13201</a>
<b>Other Accession</b>	<a href="#">NP_031377.2</a>
<b>Reactivity</b>	Human
<b>Host</b>	Rabbit
<b>Clonality</b>	Polyclonal
<b>Isotype</b>	Rabbit IgG
<b>Clone Names</b>	RB37007
<b>Calculated MW</b>	138110
<b>Antigen Region</b>	179-207

## Additional Information

---

<b>Gene ID</b>	22915
<b>Other Names</b>	Multimerin-1, EMILIN-4, Elastin microfibril interface located protein 4, Elastin microfibril interfacier 4, Endothelial cell multimerin, Platelet glycoprotein Ia*, 155 kDa platelet multimerin, p-155, p155, MMRN1, ECM, EMILIN4, GPIA*, MMRN
<b>Target/Specificity</b>	This MMRN1 antibody is generated from rabbits immunized with a KLH conjugated synthetic peptide between 179-207 amino acids from the N-terminal region of human MMRN1.
<b>Dilution</b>	WB~~1:1000 E~~Use at an assay dependent concentration.
<b>Format</b>	Purified polyclonal antibody supplied in PBS with 0.05% (V/V) Proclin 300. This antibody is purified through a protein A column, followed by peptide affinity purification.
<b>Storage</b>	Maintain refrigerated at 2-8°C for up to 2 weeks. For long term storage store at -20°C in small aliquots to prevent freeze-thaw cycles.
<b>Precautions</b>	MMRN1 Antibody (N-term) is for research use only and not for use in diagnostic or therapeutic procedures.

## Protein Information

---

<b>Name</b>	MMRN1
<b>Synonyms</b>	ECM, EMILIN4, GPIA*, MMRN

<b>Function</b>	Carrier protein for platelet (but not plasma) factor V/Va. Plays a role in the storage and stabilization of factor V in platelets. Upon release following platelet activation, may limit platelet and plasma factor Va-dependent thrombin generation. Ligand for integrin alpha-IIb/beta-3 and integrin alpha-V/beta-3 on activated platelets, and may function as an extracellular matrix or adhesive protein.
<b>Cellular Location</b>	Secreted. Note=O-fucosylation of Thr-216 and Thr- 1055 is important for protein secretion.
<b>Tissue Location</b>	Synthesized by endothelial cells and megakaryocytes. Stored in platelet alpha granules and endothelial cell Weibel-Palade bodies, following activation of these cells, it is released and attached to megakaryocytes, platelets, endothelium and subendothelium of blood vessels. Not found in plasma. Found in vascular tissues such as placenta, lung, and liver.

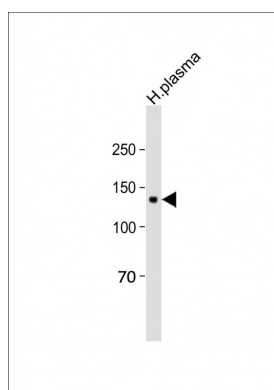
## Background

Multimerin is a massive, soluble protein found in platelets and in the endothelium of blood vessels. It is comprised of subunits linked by interchain disulfide bonds to form large, variably sized homomultimers. Multimerin is a factor V/Va-binding protein and may function as a carrier protein for platelet factor V. It may also have functions as an extracellular matrix or adhesive protein. Recently, patients with an unusual autosomal-dominant bleeding disorder (factor V Quebec) were found to have a deficiency of platelet multimerin.

## References

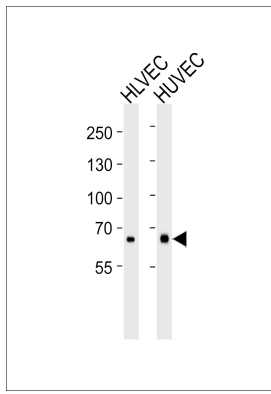
- Davila, S., et al. *Genes Immun.* 11(3):232-238(2010)  
 Simon-Sanchez, J., et al. *Nat. Genet.* 41(12):1308-1312(2009)  
 Tasneem, S., et al. *J. Thromb. Haemost.* 7(4):685-692(2009)  
 Jeimy, S.B., et al. *Thromb. Haemost.* 100(6):1058-1067(2008)  
 Jeimy, S.B., et al. *Thromb. Res.* 123(2):352-354(2008)

## Images



All lanes: Anti-MMRN1 Antibody (N-term) at 1:250 dilution + Human plasma lysate Lysates/proteins at 20 µg per lane. Secondary: Goat Anti-Rabbit IgG, (H+L), Peroxidase conjugated (ASP1615) at 1/15000 dilution. Observed band size: 138 KDa Blocking/Dilution buffer: 5% NFDM/TBST.

Western blot analysis of lysates from HLEVC, HUVEC cell line (from left to right), using MMRN1 Antibody (N-term)(Cat. #AP17087a). AP17087a was diluted at 1:1000 at each lane. A goat anti-rabbit IgG H&L(HRP) at 1:5000 dilution was used as the secondary antibody. Lysates at 35ug per lane.



Please note: All products are 'FOR RESEARCH USE ONLY. NOT FOR USE IN DIAGNOSTIC OR THERAPEUTIC PROCEDURES'.