

MAT2A Antibody (N-term)

Affinity Purified Rabbit Polyclonal Antibody (Pab)

Catalog # AP17089a

Product Information

Application	WB, E
Primary Accession	P31153
Other Accession	P18298 , Q3THS6 , Q4R924 , NP_005902.1
Reactivity	Human
Predicted	Monkey, Mouse, Rat
Host	Rabbit
Clonality	Polyclonal
Isotype	Rabbit IgG
Clone Names	RB37012
Calculated MW	43661
Antigen Region	27-55

Additional Information

Gene ID	4144
Other Names	S-adenosylmethionine synthase isoform type-2, AdoMet synthase 2, Methionine adenosyltransferase 2, MAT 2, Methionine adenosyltransferase II, MAT-II, MAT2A, AMS2, MATA2
Target/Specificity	This MAT2A antibody is generated from rabbits immunized with a KLH conjugated synthetic peptide between 27-55 amino acids from the N-terminal region of human MAT2A.
Dilution	WB~~1:1000 E~~Use at an assay dependent concentration.
Format	Purified polyclonal antibody supplied in PBS with 0.05% (V/V) Proclin 300. This antibody is purified through a protein A column, followed by peptide affinity purification.
Storage	Maintain refrigerated at 2-8°C for up to 2 weeks. For long term storage store at -20°C in small aliquots to prevent freeze-thaw cycles.
Precautions	MAT2A Antibody (N-term) is for research use only and not for use in diagnostic or therapeutic procedures.

Protein Information

Name	MAT2A
Synonyms	AMS2, MATA2

Function	Catalyzes the formation of S-adenosylmethionine from methionine and ATP. The reaction comprises two steps that are both catalyzed by the same enzyme: formation of S-adenosylmethionine (AdoMet) and triphosphate, and subsequent hydrolysis of the triphosphate.
Tissue Location	Detected in kidney..

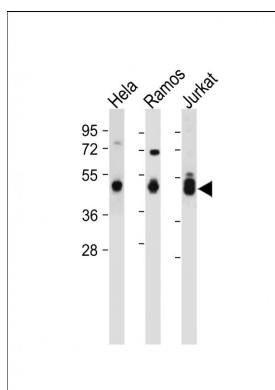
Background

MAT2A catalyzes the formation of S-adenosylmethionine from methionine and ATP.

References

Bailey, S.D., et al. Diabetes Care 33(10):2250-2253(2010)
 Levine, A.J., et al. Cancer Epidemiol. Biomarkers Prev. 19(7):1812-1821(2010)
 Jugessur, A., et al. PLoS ONE 5 (7), E11493 (2010) :
 Talmud, P.J., et al. Am. J. Hum. Genet. 85(5):628-642(2009)
 Martinez, C.A., et al. Am. J. Obstet. Gynecol. 201 (4), 394 (2009) :

Images



All lanes : Anti-MAT2A Antibody (N-term) at 1:2000 dilution
 Lane 1: HeLa whole cell lysate
 Lane 2: Ramos whole cell lysate
 Lane 3: Jurkat whole cell lysate
 Lysates/proteins at 20 µg per lane. Secondary Goat Anti-Rabbit IgG, (H+L), Peroxidase conjugated at 1/10000 dilution. Predicted band size : 44 kDa
 Blocking/Dilution buffer: 5% NFDM/TBST.

Please note: All products are 'FOR RESEARCH USE ONLY. NOT FOR USE IN DIAGNOSTIC OR THERAPEUTIC PROCEDURES'.