

IL28 Antibody (Center)

Purified Rabbit Polyclonal Antibody (Pab)

Catalog # AP1708b

Product Information

Application	WB, E
Primary Accession	Q8IZJ0
Reactivity	Human, Mouse
Host	Rabbit
Clonality	Polyclonal
Isotype	Rabbit IgG
Clone Names	RB03232
Calculated MW	22288
Antigen Region	61-92

Additional Information

Gene ID	282616
Other Names	Interferon lambda-2, IFN-lambda-2, Cytokine Zcyto20, Interleukin-28A, IL-28A, IFNL2, IL28A, ZCYTO20
Target/Specificity	This IL28 antibody is generated from rabbits immunized with a KLH conjugated synthetic peptide between 61-92 amino acids from the Central region of human IL28.
Dilution	WB~~1:1000 E~~Use at an assay dependent concentration.
Format	Purified polyclonal antibody supplied in PBS with 0.09% (W/V) sodium azide. This antibody is prepared by Saturated Ammonium Sulfate (SAS) precipitation followed by dialysis against PBS.
Storage	Maintain refrigerated at 2-8°C for up to 2 weeks. For long term storage store at -20°C in small aliquots to prevent freeze-thaw cycles.
Precautions	IL28 Antibody (Center) is for research use only and not for use in diagnostic or therapeutic procedures.

Protein Information

Name	IFNL2
Synonyms	IL28A, ZCYTO20
Function	Cytokine with antiviral, antitumour and immunomodulatory activities. Plays a critical role in the antiviral host defense, predominantly in the epithelial

tissues. Acts as a ligand for the heterodimeric class II cytokine receptor composed of IL10RB and IFNLR1, and receptor engagement leads to the activation of the JAK/STAT signaling pathway resulting in the expression of IFN-stimulated genes (ISG), which mediate the antiviral state. Has a restricted receptor distribution and therefore restricted targets: is primarily active in epithelial cells and this cell type-selective action is because of the epithelial cell-specific expression of its receptor IFNLR1. Seems not to be essential for early virus-activated host defense in vaginal infection, but plays an important role in Toll-like receptor (TLR)- induced antiviral defense. Plays a significant role in the antiviral immune defense in the intestinal epithelium. Exerts an immunomodulatory effect by up-regulating MHC class I antigen expression.

Cellular Location

Secreted.

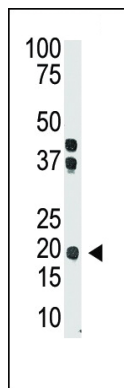
Background

IL28 is a cytokine distantly related to type I interferons and the IL-10 family. This gene, interleukin 28B (IL28B), and interleukin 29 (IL29) are three closely related cytokine genes that form a cytokine gene cluster on a chromosomal region mapped to 19q13. Expression of the cytokines encoded by the three genes can be induced by viral infection. All three cytokines have been shown to interact with a heterodimeric class II cytokine receptor that consists of interleukin 10 receptor, beta (IL10RB) and interleukin 28 receptor, alpha (IL28RA).

References

Kotenko, S.V., et al., Nat. Immunol. 4(1):69-77 (2003).
Sheppard, P., et al., Nat. Immunol. 4(1):63-68 (2003).

Images



The anti-IL28 Ctr-term Pab (Cat. #AP1708b) is used in Western blot to detect IL28 in mouse brain tissue lysate.

Please note: All products are 'FOR RESEARCH USE ONLY. NOT FOR USE IN DIAGNOSTIC OR THERAPEUTIC PROCEDURES'.