

PRLHR Antibody (C-term)

Affinity Purified Rabbit Polyclonal Antibody (Pab)

Catalog # AP17104b

Product Information

Application	WB, E
Primary Accession	P49683
Other Accession	Q4EW11 , NP_004239.1
Reactivity	Human
Predicted	Bovine
Host	Rabbit
Clonality	Polyclonal
Isotype	Rabbit IgG
Clone Names	RB37060
Calculated MW	41121
Antigen Region	284-312

Additional Information

Gene ID	2834
Other Names	Prolactin-releasing peptide receptor, PrRP receptor, PrRPR, G-protein coupled receptor 10, hGR3, PRLHR, GPR10, GR3
Target/Specificity	This PRLHR antibody is generated from rabbits immunized with a KLH conjugated synthetic peptide between 284-312 amino acids from the C-terminal region of human PRLHR.
Dilution	WB~~1:1000 E~~Use at an assay dependent concentration.
Format	Purified polyclonal antibody supplied in PBS with 0.09% (W/V) sodium azide. This antibody is purified through a protein A column, followed by peptide affinity purification.
Storage	Maintain refrigerated at 2-8°C for up to 2 weeks. For long term storage store at -20°C in small aliquots to prevent freeze-thaw cycles.
Precautions	PRLHR Antibody (C-term) is for research use only and not for use in diagnostic or therapeutic procedures.

Protein Information

Name	PRLHR
Synonyms	GPR10, GR3

Function	Receptor for prolactin-releasing peptide (PrRP). Implicated in lactation, regulation of food intake and pain-signal processing.
Cellular Location	Cell membrane; Multi-pass membrane protein.
Tissue Location	Only detected in the pituitary gland and in all cell types of pituitary adenomas.

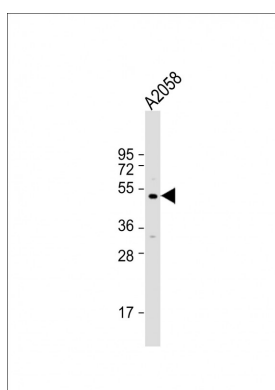
Background

PRLHR is a 7-transmembrane domain receptor for prolactin-releasing hormone (PRLH; MIM 602663) that is highly expressed in anterior pituitary (Ozawa et al., 2002 [PubMed 11923475]).

References

Bailey, S.D., et al. Diabetes Care (2010) In press :
Talmud, P.J., et al. Am. J. Hum. Genet. 85(5):628-642(2009)
Lagerstrom, M.C., et al. Genomics 85(6):688-703(2005)
Ellacott, K.L., et al. Peptides 26(4):675-681(2005)
Deloukas, P., et al. Nature 429(6990):375-381(2004)

Images



Anti-PRLHR Antibody (C-term) at 1:1000 dilution + A2058 whole cell lysate Lysates/proteins at 20 µg per lane. Secondary Goat Anti-Rabbit IgG, (H+L), Peroxidase conjugated at 1/10000 dilution. Predicted band size : 41 kDa Blocking/Dilution buffer: 5% NFDM/TBST.

Please note: All products are 'FOR RESEARCH USE ONLY. NOT FOR USE IN DIAGNOSTIC OR THERAPEUTIC PROCEDURES'.