

# CNDP2 Antibody (C-term)

Affinity Purified Rabbit Polyclonal Antibody (Pab)

Catalog # AP17117b

## Product Information

---

Application	WB, E
Primary Accession	<a href="#">Q96KP4</a>
Other Accession	<a href="#">NP_060705.2</a> , <a href="#">NP_001161971.1</a>
Reactivity	Human
Host	Rabbit
Clonality	Polyclonal
Isotype	Rabbit IgG
Clone Names	RB37241
Calculated MW	52878
Antigen Region	348-375

## Additional Information

---

Gene ID	55748
Other Names	Cytosolic non-specific dipeptidase, CNDP dipeptidase 2, Glutamate carboxypeptidase-like protein 1, Peptidase A, CNDP2, CN2, CPGL, PEPA
Target/Specificity	This CNDP2 antibody is generated from rabbits immunized with a KLH conjugated synthetic peptide between 348-375 amino acids from the C-terminal region of human CNDP2.
Dilution	WB~~1:1000 E~~Use at an assay dependent concentration.
Format	Purified polyclonal antibody supplied in PBS with 0.09% (W/V) sodium azide. This antibody is purified through a protein A column, followed by peptide affinity purification.
Storage	Maintain refrigerated at 2-8°C for up to 2 weeks. For long term storage store at -20°C in small aliquots to prevent freeze-thaw cycles.
Precautions	CNDP2 Antibody (C-term) is for research use only and not for use in diagnostic or therapeutic procedures.

## Protein Information

---

Name	CNDP2 {ECO:0000303   PubMed:25964343, ECO:0000312   HGNC:HGNC:24437}
Function	Catalyzes the peptide bond hydrolysis in dipeptides, displaying a non-redundant activity toward threonyl dipeptides (By similarity). Mediates

threonyl dipeptide catabolism in a tissue- specific way (By similarity). Has high dipeptidase activity toward cysteinylglycine, an intermediate metabolite in glutathione metabolism (PubMed:[12473676](#), PubMed:[19346245](#)). Metabolizes N-lactoyl-amino acids, both through hydrolysis to form lactic acid and amino acids, as well as through their formation by reverse proteolysis (PubMed:[25964343](#)). Plays a role in the regulation of cell cycle arrest and apoptosis (PubMed:[17121880](#), PubMed:[24395568](#)).

**Cellular Location**

Cytoplasm

**Tissue Location**

[Isoform 1]: Ubiquitously expressed with higher levels in kidney and liver (at protein level). Expressed in peripheral blood leukocytes (PubMed:12473676). Expressed in gastric mucosa and down-regulated in gastric cancer mucosal tissues (at protein level) (PubMed:24395568).

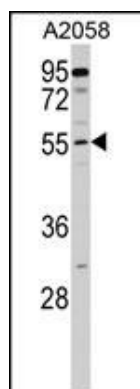
## Background

CNDP2, also known as tissue carnosinase and peptidase A (EC 3.4.13.18), is a nonspecific dipeptidase rather than a selective carnosinase (Teufel et al., 2003 [PubMed 12473676]).

## References

Ahmed, A.H., et al. Biochemistry 49(13):2843-2850(2010)  
McDonough, C.W., et al. Hum. Genet. 126(2):265-275(2009)  
Wanic, K., et al. Diabetes 57(9):2547-2551(2008)  
Wanic, K., et al. Diabetes (2008) In press :  
Tu, L.C., et al. Mol. Cell Proteomics 6(4):575-588(2007)

## Images



CNDP2 Antibody (C-term) (Cat. #AP17117b) western blot analysis in A2058 cell line lysates (35ug/lane). This demonstrates the CNDP2 antibody detected the CNDP2 protein (arrow).

Please note: All products are 'FOR RESEARCH USE ONLY. NOT FOR USE IN DIAGNOSTIC OR THERAPEUTIC PROCEDURES'.