

# Bmp15 Antibody (N-term)

Purified Rabbit Polyclonal Antibody (Pab)

Catalog # AP1711a

## Product Information

---

Application	WB, E
Primary Accession	<a href="#">O95972</a>
Other Accession	<a href="#">NP_005439</a>
Reactivity	Human
Host	Rabbit
Clonality	Polyclonal
Isotype	Rabbit IgG
Clone Names	RB1869
Calculated MW	45055
Antigen Region	4-33

## Additional Information

---

Gene ID	9210
Other Names	Bone morphogenetic protein 15, BMP-15, Growth/differentiation factor 9B, GDF-9B, BMP15, GDF9B
Target/Specificity	This Bmp15 antibody is generated from rabbits immunized with a KLH conjugated synthetic peptide between 4-33 amino acids from the N-terminal region of human Bmp15.
Dilution	WB~~1:1000 E~~Use at an assay dependent concentration.
Format	Purified polyclonal antibody supplied in PBS with 0.09% (W/V) sodium azide. This antibody is prepared by Saturated Ammonium Sulfate (SAS) precipitation followed by dialysis against PBS.
Storage	Maintain refrigerated at 2-8°C for up to 2 weeks. For long term storage store at -20°C in small aliquots to prevent freeze-thaw cycles.
Precautions	Bmp15 Antibody (N-term) is for research use only and not for use in diagnostic or therapeutic procedures.

## Protein Information

---

Name	BMP15
Synonyms	GDF9B
Function	May be involved in follicular development. Oocyte-specific

growth/differentiation factor that stimulates folliculogenesis and granulosa cell (GC) growth.

**Cellular Location**

Secreted.

## Background

---

Bmp15 is a member of the bone morphogenetic protein family which is part of the transforming growth factor-beta superfamily. The transforming growth factor-beta superfamily includes large families of growth and differentiation factors. It is thought that this protein may be involved in oocyte maturation and follicular development as a homodimer or by forming heterodimers with a related protein, Gdf9.

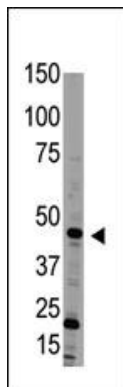
## References

---

- Liao, W.X., et al., J. Biol. Chem. 278(6):3713-3719 (2003).  
Moore, R.K., et al., J. Biol. Chem. 278(1):304-310 (2003).  
Galloway, S.M., et al., Nat. Genet. 25(3):279-283 (2000).  
Aaltonen, J., et al., J. Clin. Endocrinol. Metab. 84(8):2744-2750 (1999).  
Dube, J.L., et al., Mol. Endocrinol. 12(12):1809-1817 (1998).

## Images

---



Western blot analysis of anti-Bmp15 Antibody (N-term)  
(Cat. #AP1711a) in HL60 cell line lysate (35ug/lane).  
Bmp15(arrow) was detected using the purified Pab.

Please note: All products are 'FOR RESEARCH USE ONLY. NOT FOR USE IN DIAGNOSTIC OR THERAPEUTIC PROCEDURES'.