

BMP15 Antibody (Center)

Purified Rabbit Polyclonal Antibody (Pab)

Catalog # AP1711c

Product Information

Application	IHC-P, WB, E
Primary Accession	O95972
Other Accession	NP_005439
Reactivity	Human
Host	Rabbit
Clonality	Polyclonal
Isotype	Rabbit IgG
Clone Names	RB13971
Calculated MW	45055
Antigen Region	241-271

Additional Information

Gene ID	9210
Other Names	Bone morphogenetic protein 15, BMP-15, Growth/differentiation factor 9B, GDF-9B, BMP15, GDF9B
Target/Specificity	This BMP15 antibody is generated from rabbits immunized with a KLH conjugated synthetic peptide between 241-271 amino acids from the Central region of human BMP15.
Dilution	IHC-P~~1:100~500 WB~~1:1000 E~~Use at an assay dependent concentration.
Format	Purified polyclonal antibody supplied in PBS with 0.09% (W/V) sodium azide. This antibody is purified through a protein A column, followed by peptide affinity purification.
Storage	Maintain refrigerated at 2-8°C for up to 2 weeks. For long term storage store at -20°C in small aliquots to prevent freeze-thaw cycles.
Precautions	BMP15 Antibody (Center) is for research use only and not for use in diagnostic or therapeutic procedures.

Protein Information

Name	BMP15
Synonyms	GDF9B
Function	May be involved in follicular development. Oocyte-specific

growth/differentiation factor that stimulates folliculogenesis and granulosa cell (GC) growth.

Cellular Location

Secreted.

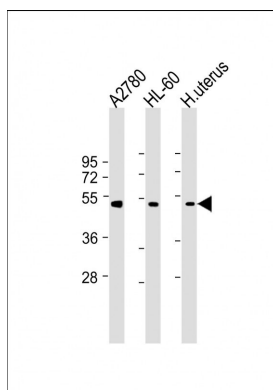
Background

Bmp15 is a member of the bone morphogenetic protein family which is part of the transforming growth factor-beta superfamily. The transforming growth factor-beta superfamily includes large families of growth and differentiation factors. It is thought that Bmp15 may be involved in oocyte maturation and follicular development as a homodimer or by forming heterodimers with a related protein, Gdf9.

References

Liao, W.X., et al., J. Biol. Chem. 278(6):3713-3719 (2003).
Moore, R.K., et al., J. Biol. Chem. 278(1):304-310 (2003).
Galloway, S.M., et al., Nat. Genet. 25(3):279-283 (2000).
Aaltonen, J., et al., J. Clin. Endocrinol. Metab. 84(8):2744-2750 (1999).
Dube, J.L., et al., Mol. Endocrinol. 12(12):1809-1817 (1998).

Images



All lanes : Anti-BMP15 Antibody (Center) at 1:2000 dilution
Lane 1: A2780 whole cell lysate
Lane 2: HL-60 whole cell lysate
Lane 3: Human uterus lysate
Lysates/proteins at 20 µg per lane. Secondary Goat Anti-Rabbit IgG, (H+L), Peroxidase conjugated at 1/10000 dilution. Predicted band size : 45 kDa
Blocking/Dilution buffer: 5% NFDM/TBST.

Please note: All products are 'FOR RESEARCH USE ONLY. NOT FOR USE IN DIAGNOSTIC OR THERAPEUTIC PROCEDURES'.