

KLHL3 Antibody (Center)

Affinity Purified Rabbit Polyclonal Antibody (Pab)

Catalog # AP17126c

Product Information

Application	WB, E
Primary Accession	Q9UH77
Other Accession	F1MBP6 , NP_059111.2
Reactivity	Human
Predicted	Bovine
Host	Rabbit
Clonality	Polyclonal
Isotype	Rabbit IgG
Clone Names	RB37267
Calculated MW	64970
Antigen Region	207-234

Additional Information

Gene ID	26249
Other Names	Kelch-like protein 3, KLHL3, KIAA1129
Target/Specificity	This KLHL3 antibody is generated from rabbits immunized with a KLH conjugated synthetic peptide between 207-234 amino acids from the Central region of human KLHL3.
Dilution	WB~~1:1000 E~~Use at an assay dependent concentration.
Format	Purified polyclonal antibody supplied in PBS with 0.09% (W/V) sodium azide. This antibody is purified through a protein A column, followed by peptide affinity purification.
Storage	Maintain refrigerated at 2-8°C for up to 2 weeks. For long term storage store at -20°C in small aliquots to prevent freeze-thaw cycles.
Precautions	KLHL3 Antibody (Center) is for research use only and not for use in diagnostic or therapeutic procedures.

Protein Information

Name	KLHL3 {ECO:0000303 PubMed:10843806, ECO:0000312 HGNC:HGNC:6354}
Function	Substrate-specific adapter of a BCR (BTB-CUL3-RBX1) E3 ubiquitin ligase complex that acts as a regulator of ion transport in the distal nephron (PubMed: 14528312 , PubMed: 22406640 , PubMed: 23387299 ,

PubMed:[23453970](#), PubMed:[23576762](#), PubMed:[23665031](#), PubMed:[25313067](#), PubMed:[35093948](#)). The BCR(KLHL3) complex acts by mediating ubiquitination and degradation of WNK1 and WNK4, two activators of Na- Cl cotransporter SLC12A3/NCC in distal convoluted tubule cells of kidney, thereby regulating NaCl reabsorption (PubMed:[23387299](#), PubMed:[23453970](#), PubMed:[23576762](#), PubMed:[23665031](#), PubMed:[25313067](#), PubMed:[35093948](#)). The BCR(KLHL3) complex also mediates ubiquitination and degradation of WNK3 (PubMed:[35179207](#)). The BCR(KLHL3) complex also mediates ubiquitination of CLDN8, a tight-junction protein required for paracellular chloride transport in the kidney, leading to its degradation (By similarity).

Cellular Location	Cytoplasm, cytosol. Cytoplasm, cytoskeleton
Tissue Location	Widely expressed..

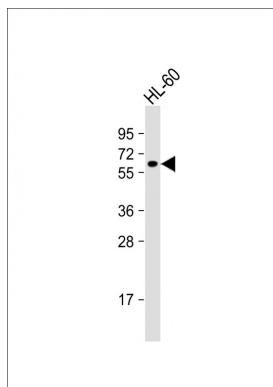
Background

Probable substrate-specific adapter of an E3 ubiquitin-protein ligase complex which mediates the ubiquitination and subsequent proteasomal degradation of target proteins.

References

Schmutz, J., et al. Nature 431(7006):268-274(2004)
Yeo, A., et al. J. Neurochem. 76(6):1688-1700(2001)
Lai, F., et al. Genomics 66(1):65-75(2000)
Mizutani, A., et al. J. Biol. Chem. 275(13):9823-9831(2000)

Images



Anti-KLHL3 Antibody (Center) at 1:1000 dilution + HL-60 whole cell lysate Lysates/proteins at 20 µg per lane. Secondary Goat Anti-Rabbit IgG, (H+L), Peroxidase conjugated at 1/10000 dilution. Predicted band size : 65kDa Blocking/Dilution buffer: 5% NFDM/TBST.

Please note: All products are 'FOR RESEARCH USE ONLY. NOT FOR USE IN DIAGNOSTIC OR THERAPEUTIC PROCEDURES'.