

RPAP1 Antibody (N-term)

Affinity Purified Rabbit Polyclonal Antibody (Pab)

Catalog # AP17128a

Product Information

Application	WB, E
Primary Accession	Q9BWH6
Other Accession	NP_056355.2
Reactivity	Human
Host	Rabbit
Clonality	Polyclonal
Isotype	Rabbit IgG
Clone Names	RB37282
Calculated MW	152755
Antigen Region	282-310

Additional Information

Gene ID	26015
Other Names	RNA polymerase II-associated protein 1, RPAP1, KIAA1403
Target/Specificity	This RPAP1 antibody is generated from rabbits immunized with a KLH conjugated synthetic peptide between 282-310 amino acids from the N-terminal region of human RPAP1.
Dilution	WB~~1:1000 E~~Use at an assay dependent concentration.
Format	Purified polyclonal antibody supplied in PBS with 0.09% (W/V) sodium azide. This antibody is purified through a protein A column, followed by peptide affinity purification.
Storage	Maintain refrigerated at 2-8°C for up to 2 weeks. For long term storage store at -20°C in small aliquots to prevent freeze-thaw cycles.
Precautions	RPAP1 Antibody (N-term) is for research use only and not for use in diagnostic or therapeutic procedures.

Protein Information

Name	RPAP1
Synonyms	KIAA1403
Function	Forms an interface between the RNA polymerase II enzyme and chaperone/scaffolding protein, suggesting that it is required to connect RNA

polymerase II to regulators of protein complex formation. Required for interaction of the RNA polymerase II complex with acetylated histone H3.

Cellular Location Nucleus.

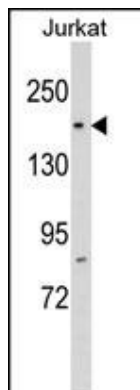
Background

The function of this gene is unknown. [provided by RefSeq].

References

Rose, J.E., et al. Mol. Med. 16 (7-8), 247-253 (2010) :
Kuraoka, I., et al. DNA Repair (Amst.) 6(6):841-851(2007)
Ballif, B.A., et al. Mol. Cell Proteomics 3(11):1093-1101(2004)
Ballif, B.A., et al. Mol. Cell Proteomics 3(11):1093-1101(2004)
Beausoleil, S.A., et al. Proc. Natl. Acad. Sci. U.S.A. 101(33):12130-12135(2004)

Images



RPAP1 Antibody (N-term) (Cat. #AP17128a) western blot analysis in Jurkat cell line lysates (35ug/lane). This demonstrates the RPAP1 antibody detected the RPAP1 protein (arrow).

Please note: All products are 'FOR RESEARCH USE ONLY. NOT FOR USE IN DIAGNOSTIC OR THERAPEUTIC PROCEDURES'.