

# TRAT1 Antibody (Center)

Affinity Purified Rabbit Polyclonal Antibody (Pab)

Catalog # AP17143c

## Product Information

---

Application	WB, E
Primary Accession	<a href="#">Q6PIZ9</a>
Other Accession	<a href="#">NP_057472.2</a>
Reactivity	Human, Mouse
Host	Rabbit
Clonality	Polyclonal
Isotype	Rabbit IgG
Clone Names	RB30370
Calculated MW	21211
Antigen Region	98-127

## Additional Information

---

Gene ID	50852
Other Names	T-cell receptor-associated transmembrane adapter 1, T-cell receptor-interacting molecule, TRIM, pp29/30, TRAT1, TCRIM
Target/Specificity	This TRAT1 antibody is generated from rabbits immunized with a KLH conjugated synthetic peptide between 98-127 amino acids from the Central region of human TRAT1.
Dilution	WB~~1:1000 E~~Use at an assay dependent concentration.
Format	Purified polyclonal antibody supplied in PBS with 0.09% (W/V) sodium azide. This antibody is purified through a protein A column, followed by peptide affinity purification.
Storage	Maintain refrigerated at 2-8°C for up to 2 weeks. For long term storage store at -20°C in small aliquots to prevent freeze-thaw cycles.
Precautions	TRAT1 Antibody (Center) is for research use only and not for use in diagnostic or therapeutic procedures.

## Protein Information

---

Name	TRAT1
Synonyms	TCRIM
Function	Stabilizes the TCR (T-cell antigen receptor)/CD3 complex at the surface of

T-cells.

**Cellular Location**

Cell membrane; Single-pass type III membrane protein

**Tissue Location**

Strongly expressed in thymus, and to a lesser extent in spleen, lymph node and peripheral blood lymphocytes. Present in T-cells and NK cells, but not B-cells (at protein level)

## Background

---

TRAT1 stabilizes the TCR (T-cell antigen receptor)/CD3 complex at the surface of T-cells.

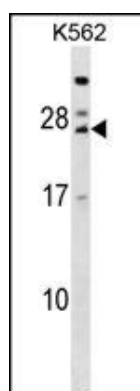
## References

---

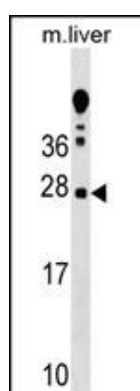
Jarvis, L.B., et al. Hum. Immunol. 69(11):687-695(2008)  
Tedoldi, S., et al. Blood 107(1):213-221(2006)  
Koyasu, S. Nat. Immunol. 4(4):313-319(2003)  
Kirchgessner, H., et al. J. Exp. Med. 193(11):1269-1284(2001)  
Zhang, W., et al. Semin. Immunol. 12(1):35-41(2000)

## Images

---



TRAT1 Antibody (Center) (Cat. #AP17143c) western blot analysis in K562 cell line lysates (35ug/lane). This demonstrates the TRAT1 antibody detected the TRAT1 protein (arrow).



TRAT1 Antibody (Center) (Cat. #AP17143c) western blot analysis in mouse liver tissue lysates (35ug/lane). This demonstrates the TRAT1 antibody detected the TRAT1 protein (arrow).

Please note: All products are 'FOR RESEARCH USE ONLY. NOT FOR USE IN DIAGNOSTIC OR THERAPEUTIC PROCEDURES'.