

UBE2G1 Antibody (C-term)

Affinity Purified Rabbit Polyclonal Antibody (Pab)

Catalog # AP17162b

Product Information

Application	WB, E
Primary Accession	P62253
Other Accession	P62255 , P62254 , Q4R5Y8 , NP_003333.1
Reactivity	Human
Predicted	Monkey, Mouse, Rat
Host	Rabbit
Clonality	Polyclonal
Isotype	Rabbit IgG
Clone Names	RB36399
Calculated MW	19509
Antigen Region	127-155

Additional Information

Gene ID	7326
Other Names	Ubiquitin-conjugating enzyme E2 G1, E217K, UBC7, Ubiquitin carrier protein G1, Ubiquitin-protein ligase G1, Ubiquitin-conjugating enzyme E2 G1, N-terminally processed, UBE2G1, UBE2G
Target/Specificity	This UBE2G1 antibody is generated from rabbits immunized with a KLH conjugated synthetic peptide between 127-155 amino acids from the C-terminal region of human UBE2G1.
Dilution	WB~~1:1000 E~~Use at an assay dependent concentration.
Format	Purified polyclonal antibody supplied in PBS with 0.09% (W/V) sodium azide. This antibody is purified through a protein A column, followed by peptide affinity purification.
Storage	Maintain refrigerated at 2-8°C for up to 2 weeks. For long term storage store at -20°C in small aliquots to prevent freeze-thaw cycles.
Precautions	UBE2G1 Antibody (C-term) is for research use only and not for use in diagnostic or therapeutic procedures.

Protein Information

Name	UBE2G1
Synonyms	UBE2G

Function Accepts ubiquitin from the E1 complex and catalyzes its covalent attachment to other proteins. In vitro catalyzes 'Lys-48'-, as well as 'Lys-63'-linked polyubiquitination. May be involved in degradation of muscle-specific proteins. Mediates polyubiquitination of CYP3A4.

Tissue Location Widely expressed, mainly in skeletal muscle.

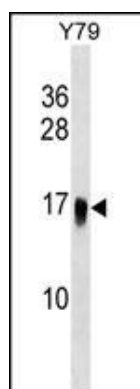
Background

The modification of proteins with ubiquitin is an important cellular mechanism for targeting abnormal or short-lived proteins for degradation. Ubiquitination involves at least three classes of enzymes: ubiquitin-activating enzymes, or E1s, ubiquitin-conjugating enzymes, or E2s, and ubiquitin-protein ligases, or E3s. This gene encodes a member of the E2 ubiquitin-conjugating enzyme family and catalyzes the covalent attachment of ubiquitin to other proteins. The protein may be involved in degradation of muscle-specific proteins. [provided by RefSeq].

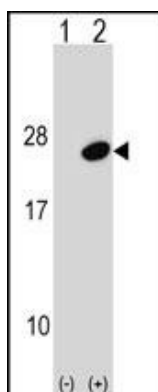
References

Hassink, G., et al. Biochem. J. 388 (PT 2), 647-655 (2005) :
Kim, B.W., et al. Mol. Endocrinol. 17(12):2603-2612(2003)
Gevaert, K., et al. Nat. Biotechnol. 21(5):566-569(2003)
Imai, Y., et al. Cell 105(7):891-902(2001)
Tiwari, S., et al. J. Biol. Chem. 276(19):16193-16200(2001)

Images



UBE2G1 Antibody (C-term) (Cat. #AP17162b) western blot analysis in Y79 cell line lysates (35ug/lane). This demonstrates the UBE2G1 antibody detected the UBE2G1 protein (arrow).



Western blot analysis of UBE2G1 (arrow) using rabbit polyclonal UBE2G1 Antibody (C-term) (Cat. #AP17162b). 293 cell lysates (2 ug/lane) either nontransfected (Lane 1) or transiently transfected (Lane 2) with the UBE2G1 gene.

Please note: All products are 'FOR RESEARCH USE ONLY. NOT FOR USE IN DIAGNOSTIC OR THERAPEUTIC PROCEDURES'.