

## BCL7B Antibody (C-term)

Affinity Purified Rabbit Polyclonal Antibody (Pab)

Catalog # AP17168b

### Product Information

---

<b>Application</b>	WB, IHC-P, E
<b>Primary Accession</b>	<a href="#">Q9BQE9</a>
<b>Other Accession</b>	<a href="#">Q921K9</a> , <a href="#">Q3T0A6</a> , <a href="#">NP_001698.2</a>
<b>Reactivity</b>	Human, Mouse
<b>Predicted</b>	Bovine
<b>Host</b>	Rabbit
<b>Clonality</b>	Polyclonal
<b>Isotype</b>	Rabbit IgG
<b>Clone Names</b>	RB36546
<b>Calculated MW</b>	22195
<b>Antigen Region</b>	137-164

### Additional Information

---

<b>Gene ID</b>	9275
<b>Other Names</b>	B-cell CLL/lymphoma 7 protein family member B, Hom s 3, BCL7B
<b>Target/Specificity</b>	This BCL7B antibody is generated from rabbits immunized with a KLH conjugated synthetic peptide between 137-164 amino acids from the C-terminal region of human BCL7B.
<b>Dilution</b>	WB~~1:1000 IHC-P~~1:100~500 E~~Use at an assay dependent concentration.
<b>Format</b>	Purified polyclonal antibody supplied in PBS with 0.09% (W/V) sodium azide. This antibody is purified through a protein A column, followed by peptide affinity purification.
<b>Storage</b>	Maintain refrigerated at 2-8°C for up to 2 weeks. For long term storage store at -20°C in small aliquots to prevent freeze-thaw cycles.
<b>Precautions</b>	BCL7B Antibody (C-term) is for research use only and not for use in diagnostic or therapeutic procedures.

### Protein Information

---

<b>Name</b>	BCL7B
<b>Function</b>	Positive regulator of apoptosis. Plays a role in the Wnt signaling pathway, negatively regulating the expression of Wnt signaling components CTNNB1 and HMGA1 (PubMed: <a href="#">25569233</a> ). Involved in cell cycle progression,

maintenance of the nuclear structure and stem cell differentiation (PubMed:[25569233](#)). May play a role in lung tumor development or progression (By similarity).

#### Tissue Location

Ubiquitous.

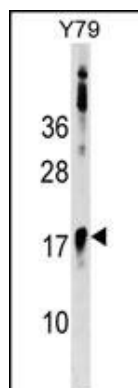
## Background

This gene encodes a member of the BCL7 family including BCL7A, BCL7B and BCL7C proteins. This member is BCL7B, which contains a region that is highly similar to the N-terminal segment of BCL7A or BCL7C proteins. The BCL7A protein is encoded by the gene known to be directly involved in a three-way gene translocation in a Burkitt lymphoma cell line. This gene is located at a chromosomal region commonly deleted in Williams syndrome. This gene is highly conserved from *C. elegans* to human. Multiple alternatively spliced transcript variants have been found for this gene.

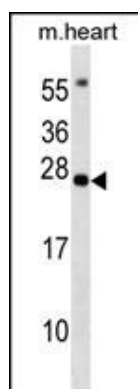
## References

Fontaine-Bisson, B., et al. *Diabetologia* 53(10):2155-2162(2010)  
Kathiresan, S., et al. *Nat. Genet.* 40(2):189-197(2008)  
Willer, C.J., et al. *Nat. Genet.* 40(2):161-169(2008)  
Olsen, J.V., et al. *Cell* 127(3):635-648(2006)  
Jadayel, D.M., et al. *Gene* 224 (1-2), 35-44 (1998) :

## Images

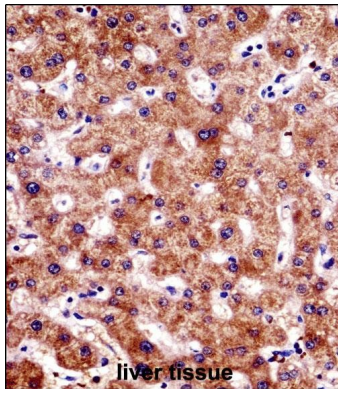


BCL7B Antibody (C-term) (Cat. #AP17168b) western blot analysis in Y79 cell line lysates (35ug/lane). This demonstrates the BCL7B antibody detected the BCL7B protein (arrow).



BCL7B Antibody (C-term) (Cat. #AP17168b) western blot analysis in mouse heart tissue lysates (35ug/lane). This demonstrates the BCL7B antibody detected the BCL7B protein (arrow).

BCL7B Antibody (C-term) (AP17168b) immunohistochemistry analysis in formalin fixed and paraffin embedded human liver tissue followed by peroxidase conjugation of the secondary antibody and DAB staining. This data demonstrates the use of BCL7B



Antibody (C-term) for immunohistochemistry. Clinical relevance has not been evaluated.

Please note: All products are 'FOR RESEARCH USE ONLY. NOT FOR USE IN DIAGNOSTIC OR THERAPEUTIC PROCEDURES'.