

# UBE2Z Antibody (C-term)

Affinity Purified Rabbit Polyclonal Antibody (Pab)

Catalog # AP17226b

## Product Information

---

<b>Application</b>	WB, E
<b>Primary Accession</b>	<a href="#">Q9H832</a>
<b>Other Accession</b>	<a href="#">Q6PCF7</a> , <a href="#">Q3B7D1</a> , <a href="#">Q3UE37</a> , <a href="#">NP_075567.2</a>
<b>Reactivity</b>	Human
<b>Predicted</b>	Mouse, Rat, Xenopus
<b>Host</b>	Rabbit
<b>Clonality</b>	Polyclonal
<b>Isotype</b>	Rabbit IgG
<b>Clone Names</b>	RB36956
<b>Calculated MW</b>	38210
<b>Antigen Region</b>	284-310

## Additional Information

---

<b>Gene ID</b>	65264
<b>Other Names</b>	Ubiquitin-conjugating enzyme E2 Z, Uba6-specific E2 conjugating enzyme 1, Use1, Ubiquitin carrier protein Z, Ubiquitin-protein ligase Z, UBE2Z
<b>Target/Specificity</b>	This UBE2Z antibody is generated from rabbits immunized with a KLH conjugated synthetic peptide between 284-310 amino acids from the C-terminal region of human UBE2Z.
<b>Dilution</b>	WB~~1:1000 E~~Use at an assay dependent concentration.
<b>Format</b>	Purified polyclonal antibody supplied in PBS with 0.09% (W/V) sodium azide. This antibody is purified through a protein A column, followed by peptide affinity purification.
<b>Storage</b>	Maintain refrigerated at 2-8°C for up to 2 weeks. For long term storage store at -20°C in small aliquots to prevent freeze-thaw cycles.
<b>Precautions</b>	UBE2Z Antibody (C-term) is for research use only and not for use in diagnostic or therapeutic procedures.

## Protein Information

---

<b>Name</b>	UBE2Z
<b>Function</b>	Catalyzes the covalent attachment of ubiquitin to other proteins (By similarity). Specific substrate for UBA6, not charged with ubiquitin by UBE1.

May be involved in apoptosis regulation.

**Cellular Location** Cytoplasm. Nucleus

**Tissue Location** Widely expressed. Highly in placenta, pancreas, spleen and testis.

## Background

---

Modification of proteins with ubiquitin (UBB; MIM 191339) or ubiquitin-like proteins controls many signaling networks and requires a ubiquitin activating enzyme (E1), a ubiquitin conjugating enzyme (E2), and a ubiquitin protein ligase (E3). UBE2Z is an E2 enzyme (Jin et al., 2007 [PubMed 17597759]).[supplied by OMIM].

## References

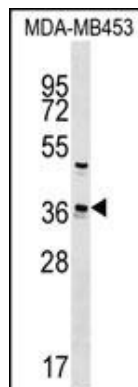
---

Gu, X., et al. Mol. Biol. Rep. 34(3):183-188(2007)

Jin, J., et al. Nature 447(7148):1135-1138(2007)

## Images

---



UBE2Z Antibody (C-term) (Cat. #AP17226b) western blot analysis in MDA-MB453 cell line lysates (35ug/lane). This demonstrates the UBE2Z antibody detected the UBE2Z protein (arrow).

Please note: All products are 'FOR RESEARCH USE ONLY. NOT FOR USE IN DIAGNOSTIC OR THERAPEUTIC PROCEDURES'.